

PHILIPPINE BIDDING DOCUMENTS

(As Harmonized with Development Partners)



Procurement of INFRASTRUCTURE PROJECTS Construction of National Child Development Center at Barangay 9 Ibaba Del Norte Paete, Laguna

Government of the Republic of the Philippines

**Sixth Edition
July 2020**

Preface

These Philippine Bidding Documents (PBDs) for the procurement of Infrastructure Projects (hereinafter referred to also as the “Works”) through Competitive Bidding have been prepared by the Government of the Philippines for use by all branches, agencies, departments, bureaus, offices, or instrumentalities of the government, including government-owned and/or -controlled corporations, government financial institutions, state universities and colleges, local government units, and autonomous regional government. The procedures and practices presented in this document have been developed through broad experience, and are for mandatory use in projects that are financed in whole or in part by the Government of the Philippines or any foreign government/foreign or international financing institution in accordance with the provisions of the 2016 revised Implementing Rules and Regulations (IRR) of Republic Act (RA) No. 9184.

The PBDs are intended as a model for admeasurements (unit prices or unit rates in a bill of quantities) types of contract, which are the most common in Works contracting.

The Bidding Documents shall clearly and adequately define, among others: (i) the objectives, scope, and expected outputs and/or results of the proposed contract; (ii) the eligibility requirements of Bidders; (iii) the expected contract duration; and (iv) the obligations, duties, and/or functions of the winning Bidder.

Care should be taken to check the relevance of the provisions of the PBDs against the requirements of the specific Works to be procured. If duplication of a subject is inevitable in other sections of the document prepared by the Procuring Entity, care must be exercised to avoid contradictions between clauses dealing with the same matter.

Moreover, each section is prepared with notes intended only as information for the Procuring Entity or the person drafting the Bidding Documents. They shall not be included in the final documents. The following general directions should be observed when using the documents:

- a. All the documents listed in the Table of Contents are normally required for the procurement of Infrastructure Projects. However, they should be adapted as necessary to the circumstances of the particular Project.
- b. Specific details, such as the “*name of the Procuring Entity*” and “*address for bid submission*,” should be furnished in the Instructions to Bidders, Bid Data Sheet, and Special Conditions of Contract. The final documents should contain neither blank spaces nor options.
- c. This Preface and the footnotes or notes in italics included in the Invitation to Bid, BDS, General Conditions of Contract, Special Conditions of Contract, Specifications, Drawings, and Bill of Quantities are not part of the text of the final document, although they contain instructions that the Procuring Entity should strictly follow.
- d. The cover should be modified as required to identify the Bidding Documents as to the names of the Project, Contract, and Procuring Entity, in addition to date of issue.

- e. Modifications for specific Procurement Project details should be provided in the Special Conditions of Contract as amendments to the Conditions of Contract. For easy completion, whenever reference has to be made to specific clauses in the Bid Data Sheet or Special Conditions of Contract, these terms shall be printed in bold typeface on Sections I (Instructions to Bidders) and III (General Conditions of Contract), respectively.
- f. For guidelines on the use of Bidding Forms and the procurement of Foreign-Assisted Projects, these will be covered by a separate issuance of the Government Procurement Policy Board.

TABLE OF CONTENTS

Glossary of Terms, Abbreviations, and Acronyms	5
Section I. Invitation to Bid.....	8
Section II. Instructions to Bidders	12
1. Scope of Bid.....	14
2. Funding Information	14
3. Bidding Requirements.....	14
4. Corrupt, Fraudulent, Collusive, Coercive, and Obstructive Practices	14
5. Eligible Bidders.....	15
6. Origin of Associated Goods	15
7. Subcontracts	15
8. Pre-Bid Conference.....	16
9. Clarification and Amendment of Bidding Documents.....	16
10. Documents Comprising the Bid: Eligibility and Technical Components	16
11. Documents Comprising the Bid: Financial Component	17
12. Alternative Bids	17
13. Bid Prices	17
14. Bid and Payment Currencies.....	17
15. Bid Security.....	18
16. Sealing and Marking of Bids.....	18
17. Deadline for Submission of Bids	18
18. Opening and Preliminary Examination of Bids	18
19. Detailed Evaluation and Comparison of Bids	18
20. Post Qualification.....	19
21. Signing of the Contract	19
Section III. Bid Data Sheet	20
Section IV. General Conditions of Contract.....	23
1. Scope of Contract.....	24
2. Sectional Completion of Works	24
3. Possession of Site	24
4. The Contractor's Obligations.....	24
5. Performance Security	25
6. Site Investigation Reports	25

7.	Warranty.....	25
8.	Liability of the Contractor.....	25
9.	Termination for Other Causes.....	25
10.	Dayworks	26
11.	Program of Work.....	26
12.	Instructions, Inspections and Audits	26
13.	Advance Payment.....	26
14.	Progress Payments	26
15.	Operating and Maintenance Manuals.....	26
	Section V. Special Conditions of Contract.....	28
	Section VI. Specifications	30
	Section VII. Drawings.....	38
	Section VIII. Bill of Quantities.....	49
	Section IX. Checklist of Technical and Financial Documents	52

Glossary of Terms, Abbreviations, and Acronyms

ABC – Approved Budget for the Contract.

ARCC – Allowable Range of Contract Cost.

BAC – Bids and Awards Committee.

Bid – A signed offer or proposal to undertake a contract submitted by a bidder in response to and in consonance with the requirements of the bidding documents. Also referred to as *Proposal* and *Tender*. (2016 revised IRR, Section 5[c])

Bidder – Refers to a contractor, manufacturer, supplier, distributor and/or consultant who submits a bid in response to the requirements of the Bidding Documents. (2016 revised IRR, Section 5[d])

Bidding Documents – The documents issued by the Procuring Entity as the bases for bids, furnishing all information necessary for a prospective bidder to prepare a bid for the Goods, Infrastructure Projects, and/or Consulting Services required by the Procuring Entity. (2016 revised IRR, Section 5[e])

BIR – Bureau of Internal Revenue.

BSP – Bangko Sentral ng Pilipinas.

CDA – Cooperative Development Authority.

Consulting Services – Refer to services for Infrastructure Projects and other types of projects or activities of the GOP requiring adequate external technical and professional expertise that are beyond the capability and/or capacity of the GOP to undertake such as, but not limited to: (i) advisory and review services; (ii) pre-investment or feasibility studies; (iii) design; (iv) construction supervision; (v) management and related services; and (vi) other technical services or special studies. (2016 revised IRR, Section 5[i])

Contract – Refers to the agreement entered into between the Procuring Entity and the Supplier or Manufacturer or Distributor or Service Provider for procurement of Goods and Services; Contractor for Procurement of Infrastructure Projects; or Consultant or Consulting Firm for Procurement of Consulting Services; as the case may be, as recorded in the Contract Form signed by the parties, including all attachments and appendices thereto and all documents incorporated by reference therein.

Contractor – is a natural or juridical entity whose proposal was accepted by the Procuring Entity and to whom the Contract to execute the Work was awarded. Contractor as used in these Bidding Documents may likewise refer to a supplier, distributor, manufacturer, or consultant.

CPI – Consumer Price Index.

DOLE – Department of Labor and Employment.

DTI – Department of Trade and Industry.

Foreign-funded Procurement or Foreign-Assisted Project – Refers to procurement whose funding source is from a foreign government, foreign or international financing institution as specified in the Treaty or International or Executive Agreement. (2016 revised IRR, Section 5[b]).

GFI – Government Financial Institution.

GOCC – Government-owned and/or –controlled corporation.

Goods – Refer to all items, supplies, materials and general support services, except Consulting Services and Infrastructure Projects, which may be needed in the transaction of public businesses or in the pursuit of any government undertaking, project or activity, whether in the nature of equipment, furniture, stationery, materials for construction, or personal property of any kind, including non-personal or contractual services such as the repair and maintenance of equipment and furniture, as well as trucking, hauling, janitorial, security, and related or analogous services, as well as procurement of materials and supplies provided by the Procuring Entity for such services. The term “related” or “analogous services” shall include, but is not limited to, lease or purchase of office space, media advertisements, health maintenance services, and other services essential to the operation of the Procuring Entity. (2016 revised IRR, Section 5[r])

GOP – Government of the Philippines.

Infrastructure Projects – Include the construction, improvement, rehabilitation, demolition, repair, restoration or maintenance of roads and bridges, railways, airports, seaports, communication facilities, civil works components of information technology projects, irrigation, flood control and drainage, water supply, sanitation, sewerage and solid waste management systems, shore protection, energy/power and electrification facilities, national buildings, school buildings, hospital buildings, and other related construction projects of the government. Also referred to as *civil works or works*. (2016 revised IRR, Section 5[u])

LGUs – Local Government Units.

NFCC – Net Financial Contracting Capacity.

NGA – National Government Agency.

PCAB – Philippine Contractors Accreditation Board.

PhilGEPS - Philippine Government Electronic Procurement System.

Procurement Project – refers to a specific or identified procurement covering goods, infrastructure project or consulting services. A Procurement Project shall be described, detailed, and scheduled in the Project Procurement Management Plan prepared by the agency which shall be consolidated in the procuring entity's Annual Procurement Plan. (GPPB Circular No. 06-2019 dated 17 July 2019)

PSA – Philippine Statistics Authority.

SEC – Securities and Exchange Commission.

SLCC – Single Largest Completed Contract.

UN – United Nations.

Section I. Invitation to Bid



**Republic of the Philippines
Province of Laguna
Municipality of Paete**

Tel. Nos. (049) 501-6490-101, (049) 557-0001

**Invitation to Bid for Construction of National Child
Development Center at Barangay Ibaba del Norte Paete,
Laguna**

1. The **Municipality of Paete, Laguna**, through the **ECCD fund** intends to apply the sum of *two million four hundred ninety-nine thousand five hundred forty-four pesos and 46/100 only (Php 2,499,544.46)* being the Approved Budget for the Contract (ABC) to payments under the contract for *Construction of National Child Development Center*. Bids received in excess of the ABC shall be automatically rejected at bid opening.
Description of Work:
Mobilization/Temporary Facilities/demobilization/safety & health Program
Eartworks, Concretinf work (includes ramp on fill)
Formworks, Reinforcing Steel Bars, Mansonry works,
Doors & windows, Steel works, roofing works, carpentry works, tiles works, electrical works, Plumbing & Sanitary works, CHB septic vault and others
2. The **Municipality of Paete, Laguna** now invites bids for the above Procurement Project. Completion of the Works is required *120 calendar days*. Bidders should have completed a contract similar to the Project. The description of an eligible bidder is contained in the Bidding Documents, particularly, in Section II (Instructions to Bidders).
3. Bidding will be conducted through open competitive bidding procedures using non-discretionary "*pass/fail*" criterion as specified in the 2016 revised Implementing Rules and Regulations (IRR) of Republic Act (RA) No. 9184.
4. Interested bidders may obtain further information from **Municipality of Paete, Laguna** and inspect the Bidding Documents at the address given below from **8:00 am to 5:00 pm Monday to Friday**.
5. A complete set of Bidding Documents may be acquired by interested bidders on **January 25-February 16, 2021** from given address and website/s upon payment of a nonrefundable fee for the Bidding Documents in the amount of **five thousand pesos only (Php 5,000.00)**. It may also be downloaded free of charge from the website of the Philippine Government Electronic Procurement System (PhilGEPS) and the website of the Procuring Entity, provided that bidders shall pay the applicable fee for the Bidding Documents not later than the submission of their bids. The Procuring Entity shall allow the bidder to present its proof of payment for the fees **presented in person through BAC Secretariat**.

6. The *Municipality of Paete, Laguna* will hold a Pre-Bid Conference¹ on **February 2, 2021@ 10:00 am** at **Municipal Building, Municipal Hall J.V. Quesada St. Barangay 1, Paete, Laguna** which shall be open to prospective bidders.
7. Bids must be duly received by the BAC Secretariat through manual submission at the office address as indicated below on or before **February 16, 2021@ 9:00 am**. Late bids shall not be accepted.
8. All bids must be accompanied by a bid security in any of the acceptable forms and in the amount stated in **ITB** Clause 16.
9. Bid opening shall be on **February 16, 2021@10:00 am** at the given address below **Municipal Building, Municipal Hall, J.V. Quesada St. Brgy 1, Paete, Laguna** Bids will be opened in the presence of the bidders' representatives who choose to attend the activity.

The schedule of BAC activities is as follows:

BAC Activities	Schedule
1. Advertisement/Issuance of Bidding Documents	January 25-February 16, 2021
2. Pre-bid Conference	February 2, 2021@10:00 am
3. Deadline of Submission of Bids	February 16, 2021 @9:00 am
4. Opening of Bids	February 16, 2021 @10:00 am
5. Bid Evaluation	February 17, 2021
6. Post-qualification	February 17-18, 2021
7. Notice of Award	February 22, 2021
8. Contract Agreement	March 4, 2021
9. Notice to Proceed	March 5, 2021

¹ May be deleted in case the ABC is less than One Million Pesos (PhP1,000,000) where the Procuring Entity may not hold a pre-bid conference.

10. The *Municipality Of Paete, Laguna* reserves the right to reject any and all bids, declare a failure of bidding, or not award the contract at any time prior to contract award in accordance with Sections 35.6 and 41 of the 2016 revised Implementing Rules and Regulations (IRR) of RA No. 9184, without thereby incurring any liability to the affected bidder or bidders.

11. For further information, please refer to:

Christine M. Cainto
Bac Secretariat
J.V. Quesada St. B-1 Paete, Laguna
odacrem_12@yahoo.com
049-501-6490-101
Paete.gov.ph

12. You may visit the following websites:

For downloading of Bidding Documents: www.philgeps.gov.ph and www.Paete.gov.ph

[January 20, 2021]

ANTONIO C. DELA ROSA
BAC CHAIRMAN

Section II. Instructions to Bidders

INSTRUCTIONS TO BIDDERS

1. Introduction

The Municipality of Paete, Laguna, through the ECCD Fund. intends to apply the sum of two million four hundred ninety-nine thousand five hundred forty-four pesos and 46/100 only (Php 2,499,544.46) being the Approved Budget for the Contract (ABC) to payments under the contract for Construction of National Child Development Center. The bidding process assumes the following timetable:

BAC Activities	Schedule
1. Advertisement/Issuance of Bidding Documents	January 25-February 16, 2021
2. Pre-bid Conference	February 2, 2021 @10:00 am
3. Deadline of Submission of Bids	February 16, 2021 @9:00 am
4. Opening of Bids	February 16, 2021 @10:00 am
5. Bid Evaluation	February 17, 2021
6. Post-qualification	February 17-18, 2021
7. Notice of Award	February 22, 2021

The eligibility and technical documents of the Bid as specified in Section IX. Checklist of Technical and Financial Documents.

1. Affidavit of site Inspection.

2. Please read Bid Data Sheet for additional requirements.

Note: deadline of Submission is on February 16, 2021 @9:00 am based on the Municipal Bundy clock, Late bids will not be accepted.

ANTONIO C. DELA ROSA

BAC Chairman

1. Scope of Bid

The Procuring Entity, *Municipality of Paete, Laguna* invites Bids for the Construction of National Child Development Center at Barangay Ibaba Del Norte Paete, Laguna with Project Identification Number *IP-001-21-BLDG*

[Note: The Project Identification Number is assigned by the Procuring Entity based on its own coding scheme and is not the same as the PhilGEPS reference number, which is generated after the posting of the bid opportunity on the PhilGEPS website.]

The Procurement Project (referred to herein as “Project”) is for the construction of Works, as described in Section VI (Specifications).

2. Funding Information

2.1. The GOP through the source of funding as indicated below for **year 2020** in the amount of ***two million four hundred ninety-nine thousand five hundred forty-four pesos and 46/100 only (Php 2,499,544.46)***.

2.2. The source of funding is:

- a. NGA, the General Appropriations Act or Special Appropriations.

3. Bidding Requirements

The Bidding for the Project shall be governed by all the provisions of RA No. 9184 and its 2016 revised IRR, including its Generic Procurement Manual and associated policies, rules and regulations as the primary source thereof, while the herein clauses shall serve as the secondary source thereof.

Any amendments made to the IRR and other GPPB issuances shall be applicable only to the ongoing posting, advertisement, or invitation to bid by the BAC through the issuance of a supplemental or bid bulletin.

The Bidder, by the act of submitting its Bid, shall be deemed to have inspected the site, determined the general characteristics of the contracted Works and the conditions for this Project, such as the location and the nature of the work; (b) climatic conditions; (c) transportation facilities; (c) nature and condition of the terrain, geological conditions at the site communication facilities, requirements, location and availability of construction aggregates and other materials, labor, water, electric power and access roads; and (d) other factors that may affect the cost, duration and execution or implementation of the contract, project, or work and examine all instructions, forms, terms, and project requirements in the Bidding Documents.

4. Corrupt, Fraudulent, Collusive, Coercive, and Obstructive Practices

The Procuring Entity, as well as the Bidders and Contractors, shall observe the highest standard of ethics during the procurement and execution of the contract. They or through an agent shall not engage in corrupt, fraudulent, collusive, coercive, and

obstructive practices defined under Annex “I” of the 2016 revised IRR of RA No. 9184 or other integrity violations in competing for the Project.

5. Eligible Bidders

- 5.1. Only Bids of Bidders found to be legally, technically, and financially capable will be evaluated.
- 5.2. The Bidder must have an experience of having completed a Single Largest Completed Contract (SLCC) that is similar to this Project, equivalent to at least fifty percent (50%) of the ABC adjusted, if necessary, by the Bidder to current prices using the PSA’s CPI, except under conditions provided for in Section 23.4.2.4 of the 2016 revised IRR of RA No. 9184.

A contract is considered to be “similar” to the contract to be bid if it has the major categories of work stated in the **BDS**.

- 5.3. For Foreign-funded Procurement, the Procuring Entity and the foreign government/foreign or international financing institution may agree on another track record requirement, as specified in the Bidding Document prepared for this purpose.
- 5.4. The Bidders shall comply with the eligibility criteria under Section 23.4.2 of the 2016 IRR of RA No. 9184.

6. Origin of Associated Goods

There is no restriction on the origin of Goods other than those prohibited by a decision of the UN Security Council taken under Chapter VII of the Charter of the UN.

7. Subcontracts

- 7.1. The Bidder may subcontract portions of the Project to the extent allowed by the Procuring Entity as stated herein, but in no case more than fifty percent (50%) of the Project.

The Procuring Entity has prescribed that:

a. Subcontracting is not allowed.

- 7.1. *[If Procuring Entity has determined that subcontracting is allowed during the bidding , state:]* The Bidder must submit together with its Bid the documentary requirements of the subcontractor(s) complying with the eligibility criterial stated in **ITB** Clause 5 in accordance with Section 23.4 of the 2016 revised IRR of RA No. 9184 pursuant to Section 23.1 thereof.
- 7.2. *[If subcontracting is allowed during the contract implementation stage, state:]* The Supplier may identify its subcontractor during the contract implementation stage. Subcontractors identified during the bidding may be

changed during the implementation of this Contract. Subcontractors must submit the documentary requirements under Section 23.1 of the 2016 revised IRR of RA No. 9184 and comply with the eligibility criteria specified in **ITB** Clause 5 to the implementing or end-user unit.

- 7.3. Subcontracting of any portion of the Project does not relieve the Contractor of any liability or obligation under the Contract. The Supplier will be responsible for the acts, defaults, and negligence of any subcontractor, its agents, servants, or workmen as fully as if these were the Contractor's own acts, defaults, or negligence, or those of its agents, servants, or workmen.

8. Pre-Bid Conference

The Procuring Entity will hold a pre-bid conference for this Project on the specified date and time and either at its physical address Municipal Building, Municipal Hall J.V. Quesada st. Brgy 1 Paete, Laguna and as indicated in paragraph 6 of the **IB**.

9. Clarification and Amendment of Bidding Documents

Prospective bidders may request for clarification on and/or interpretation of any part of the Bidding Documents. Such requests must be in writing and received by the Procuring Entity, either at its given address or through electronic mail indicated in the **IB**, at least ten (10) calendar days before the deadline set for the submission and receipt of Bids.

10. Documents Comprising the Bid: Eligibility and Technical Components

- 10.1. The first envelope shall contain the eligibility and technical documents of the Bid as specified in **Section IX. Checklist of Technical and Financial Documents**.
- 10.2. If the eligibility requirements or statements, the bids, and all other documents for submission to the BAC are in foreign language other than English, it must be accompanied by a translation in English, which shall be authenticated by the appropriate Philippine foreign service establishment, post, or the equivalent office having jurisdiction over the foreign bidder's affairs in the Philippines. For Contracting Parties to the Apostille Convention, only the translated documents shall be authenticated through an apostille pursuant to GPPB Resolution No. 13-2019 dated 23 May 2019. The English translation shall govern, for purposes of interpretation of the bid.
- 10.3. A valid PCAB License is required, and in case of joint ventures, a valid special PCAB License, and registration for the type and cost of the contract for this Project. Any additional type of Contractor license or permit shall be indicated in the **BDS**.
- 10.4. A List of Contractor's key personnel (e.g., Project Manager, Project Engineers, Materials Engineers, and Foremen) assigned to the contract to be bid, with their complete qualification and experience data shall be provided.

These key personnel must meet the required minimum years of experience set in the **BDS**.

- 10.5. A List of Contractor's major equipment units, which are owned, leased, and/or under purchase agreements, supported by proof of ownership, certification of availability of equipment from the equipment lessor/vendor for the duration of the project, as the case may be, must meet the minimum requirements for the contract set in the **BDS**.

11. Documents Comprising the Bid: Financial Component

- 11.1. The second bid envelope shall contain the financial documents for the Bid as specified in **Section IX. Checklist of Technical and Financial Documents**.
- 11.2. Any bid exceeding the ABC indicated in paragraph 1 of the **IB** shall not be accepted.
- 11.3. For Foreign-funded procurement, a ceiling may be applied to bid prices provided the conditions are met under Section 31.2 of the 2016 revised IRR of RA No. 9184.

12. Alternative Bids

Bidders shall submit offers that comply with the requirements of the Bidding Documents, including the basic technical design as indicated in the drawings and specifications. Unless there is a value engineering clause in the **BDS**, alternative Bids shall not be accepted.

13. Bid Prices

All bid prices for the given scope of work in the Project as awarded shall be considered as fixed prices, and therefore not subject to price escalation during contract implementation, except under extraordinary circumstances as determined by the NEDA and approved by the GPPB pursuant to the revised Guidelines for Contract Price Escalation guidelines.

14. Bid and Payment Currencies

- 14.1. Bid prices may be quoted in the local currency or tradeable currency accepted by the BSP at the discretion of the Bidder. However, for purposes of bid evaluation, Bids denominated in foreign currencies shall be converted to Philippine currency based on the exchange rate as published in the BSP reference rate bulletin on the day of the bid opening.
- 14.2. *Payment of the contract price shall be made in:*
 - a. Philippine Pesos.

15. Bid Security

- 15.1. The Bidder shall submit a Bid Securing Declaration or any form of Bid Security in the amount indicated in the **BDS**, which shall be not less than the percentage of the ABC in accordance with the schedule in the **BDS**.
- 15.2. The Bid and bid security shall be valid until **June 16, 2021**. Any bid not accompanied by an acceptable bid security shall be rejected by the Procuring Entity as non-responsive.

16. Sealing and Marking of Bids

Each Bidder shall submit one copy of the first and second components of its Bid.

The Procuring Entity may request additional hard copies and/or electronic copies of the Bid. However, failure of the Bidders to comply with the said request shall not be a ground for disqualification.

If the Procuring Entity allows the submission of bids through online submission to the given website or any other electronic means, the Bidder shall submit an electronic copy of its Bid, which must be digitally signed. An electronic copy that cannot be opened or is corrupted shall be considered non-responsive and, thus, automatically disqualified.

17. Deadline for Submission of Bids

The Bidders shall submit on the specified date and time and either at its physical address or through online submission as indicated in paragraph 7 of the **IB**.

18. Opening and Preliminary Examination of Bids

- 18.1. The BAC shall open the Bids in public at the time, on the date, and at the place specified in paragraph 9 of the **IB**. The Bidders' representatives who are present shall sign a register evidencing their attendance. In case videoconferencing, webcasting or other similar technologies will be used, attendance of participants shall likewise be recorded by the BAC Secretariat.

In case the Bids cannot be opened as scheduled due to justifiable reasons, the rescheduling requirements under Section 29 of the 2016 revised IRR of RA No. 9184 shall prevail.

- 18.2. The preliminary examination of Bids shall be governed by Section 30 of the 2016 revised IRR of RA No. 9184.

19. Detailed Evaluation and Comparison of Bids

- 19.1. The Procuring Entity's BAC shall immediately conduct a detailed evaluation of all Bids rated "*passed*" using non-discretionary pass/fail criteria. The BAC

shall consider the conditions in the evaluation of Bids under Section 32.2 of 2016 revised IRR of RA No. 9184.

- 19.2. If the Project allows partial bids, all Bids and combinations of Bids as indicated in the **BDS** shall be received by the same deadline and opened and evaluated simultaneously so as to determine the Bid or combination of Bids offering the lowest calculated cost to the Procuring Entity. Bid Security as required by **ITB** Clause 16 shall be submitted for each contract (lot) separately.
- 19.3. In all cases, the NFCC computation pursuant to Section 23.4.2.6 of the 2016 revised IRR of RA No. 9184 must be sufficient for the total of the ABCs for all the lots participated in by the prospective Bidder.

20. Post Qualification

Within a non-extendible period of five (5) calendar days from receipt by the Bidder of the notice from the BAC that it submitted the Lowest Calculated Bid, the Bidder shall submit its latest income and business tax returns filed and paid through the BIR Electronic Filing and Payment System (eFPS), and other appropriate licenses and permits required by law and stated in the **BDS**.

21. Signing of the Contract

The documents required in Section 37.2 of the 2016 revised IRR of RA No. 9184 shall form part of the Contract. Additional Contract documents are indicated in the **BDS**.

Section III. Bid Data Sheet

Notes on the Bid Data Sheet (BDS)

The Bid Data Sheet (BDS) consists of provisions that supplement, amend, or specify in detail, information, or requirements included in the ITB found in Section II, which are specific to each procurement.

This Section is intended to assist the Procuring Entity in providing the specific information in relation to corresponding clauses in the ITB and has to be prepared for each specific procurement.

The Procuring Entity should specify in the BDS information and requirements specific to the circumstances of the Procuring Entity, the processing of the procurement, and the bid evaluation criteria that will apply to the Bids. In preparing the BDS, the following aspects should be checked:

- a. Information that specifies and complements provisions of the ITB must be incorporated.
- b. Amendments and/or supplements, if any, to provisions of the ITB as necessitated by the circumstances of the specific procurement, must also be incorporated.

Bid Data Sheet

ITB Clause																																											
5.2	For this purpose, contracts similar to the Project refer to contracts which have the same major categories of work, which shall be: <i>Building</i>																																										
7.1	<i>Subcontracting is not allowed.</i>																																										
10.3	<i>Valid PCAB License</i>																																										
10.4	The key personnel must meet the required minimum years of experience set below: <table border="1" style="width: 100%; border-collapse: collapse;"> <thead> <tr> <th style="text-align: left;"><u>Key Personnel</u></th> <th style="text-align: center;"><u>General Experience</u></th> <th style="text-align: center;"><u>Relevant Experience</u></th> </tr> </thead> <tbody> <tr> <td>Project Manager,</td> <td style="text-align: center;">3 years</td> <td style="text-align: center;">3 years</td> </tr> <tr> <td>Project Engineers</td> <td style="text-align: center;">3 years</td> <td style="text-align: center;">3 years</td> </tr> <tr> <td>Materials Engineers</td> <td style="text-align: center;">3 years</td> <td style="text-align: center;">3 years</td> </tr> <tr> <td>Foremen</td> <td style="text-align: center;">3 years</td> <td style="text-align: center;">3 years</td> </tr> <tr> <td>Mason/carpenter</td> <td style="text-align: center;">3 years</td> <td style="text-align: center;">3 years</td> </tr> <tr> <td>Electrician</td> <td style="text-align: center;">3 years</td> <td style="text-align: center;">3 years</td> </tr> <tr> <td>Welder</td> <td></td> <td></td> </tr> <tr> <td>Steelman</td> <td></td> <td></td> </tr> <tr> <td>Part Time Practitioner</td> <td></td> <td></td> </tr> <tr> <td>First Aider</td> <td></td> <td></td> </tr> <tr> <td>Painter</td> <td></td> <td></td> </tr> <tr> <td>Tinsmith</td> <td></td> <td></td> </tr> <tr> <td>Laborer</td> <td></td> <td></td> </tr> </tbody> </table>	<u>Key Personnel</u>	<u>General Experience</u>	<u>Relevant Experience</u>	Project Manager,	3 years	3 years	Project Engineers	3 years	3 years	Materials Engineers	3 years	3 years	Foremen	3 years	3 years	Mason/carpenter	3 years	3 years	Electrician	3 years	3 years	Welder			Steelman			Part Time Practitioner			First Aider			Painter			Tinsmith			Laborer		
<u>Key Personnel</u>	<u>General Experience</u>	<u>Relevant Experience</u>																																									
Project Manager,	3 years	3 years																																									
Project Engineers	3 years	3 years																																									
Materials Engineers	3 years	3 years																																									
Foremen	3 years	3 years																																									
Mason/carpenter	3 years	3 years																																									
Electrician	3 years	3 years																																									
Welder																																											
Steelman																																											
Part Time Practitioner																																											
First Aider																																											
Painter																																											
Tinsmith																																											
Laborer																																											
10.5	The minimum major equipment requirements are the following: <table border="1" style="width: 100%; border-collapse: collapse;"> <thead> <tr> <th style="text-align: left;"><u>Equipment</u></th> <th style="text-align: center;"><u>Capacity</u></th> <th style="text-align: center;"><u>Number of Units</u></th> </tr> </thead> <tbody> <tr> <td>Welding Machine</td> <td></td> <td style="text-align: center;">1</td> </tr> <tr> <td>Generator</td> <td></td> <td style="text-align: center;">1</td> </tr> <tr> <td>Concrete Virator</td> <td></td> <td style="text-align: center;">1</td> </tr> <tr> <td>Bar cutter</td> <td></td> <td style="text-align: center;">1</td> </tr> <tr> <td>Bagger cement mixer</td> <td></td> <td style="text-align: center;">1</td> </tr> <tr> <td>Hands tools</td> <td></td> <td></td> </tr> </tbody> </table>	<u>Equipment</u>	<u>Capacity</u>	<u>Number of Units</u>	Welding Machine		1	Generator		1	Concrete Virator		1	Bar cutter		1	Bagger cement mixer		1	Hands tools																							
<u>Equipment</u>	<u>Capacity</u>	<u>Number of Units</u>																																									
Welding Machine		1																																									
Generator		1																																									
Concrete Virator		1																																									
Bar cutter		1																																									
Bagger cement mixer		1																																									
Hands tools																																											
12	<i>alternative Bids shall not be accepted.</i>																																										
15.1	The bid security shall be in the form of a Bid Securing Declaration or any of the following forms and amounts:																																										

	<p>a. The amount of not less than forty nine thousand nine hundred ninety pesos and 88/100 only (Php49,990.88) [<i>two percent (2%) of ABC</i>], if bid security is in cash, cashier's/manager's check, bank draft/guarantee or irrevocable letter of credit;</p> <p>b. The amount of not less than one hundred twenty-four thousand nine hundred seventy-seven pesos and 22/100 only (Php124,977.22) [<i>five percent (5%) of ABC</i>] if bid security is in Surety Bond.</p>
19.2	N/A
20	<i>Within a non-extendible period of five (5) calendar days from receipt by the Bidder of the notice from the BAC that it submitted the Lowest Calculated Bid, the Bidder shall submit its latest income and business tax returns filed and paid through the BIR Electronic Filing and Payment System (eFPS)</i>
21	Additional contract documents relevant to the Project that may be required by existing laws and/or the Procuring Entity, such as construction schedule and S-curve, manpower schedule, construction methods, equipment utilization schedule, construction safety and health program approved by the DOLE, and other acceptable tools of project scheduling.

Section IV. General Conditions of Contract

1. Scope of Contract

This Contract shall include all such items, although not specifically mentioned, that can be reasonably inferred as being required for its completion as if such items were expressly mentioned herein. All the provisions of RA No. 9184 and its 2016 revised IRR, including the Generic Procurement Manual, and associated issuances, constitute the primary source for the terms and conditions of the Contract, and thus, applicable in contract implementation. Herein clauses shall serve as the secondary source for the terms and conditions of the Contract.

This is without prejudice to Sections 74.1 and 74.2 of the 2016 revised IRR of RA No. 9184 allowing the GPPB to amend the IRR, which shall be applied to all procurement activities, the advertisement, posting, or invitation of which were issued after the effectivity of the said amendment.

2. Sectional Completion of Works

If sectional completion is specified in the **Special Conditions of Contract (SCC)**, references in the Conditions of Contract to the Works, the Completion Date, and the Intended Completion Date shall apply to any Section of the Works (other than references to the Completion Date and Intended Completion Date for the whole of the Works).

3. Possession of Site

4.1. The Procuring Entity shall give possession of all or parts of the Site to the Contractor based on the schedule of delivery indicated in the **SCC**, which corresponds to the execution of the Works. If the Contractor suffers delay or incurs cost from failure on the part of the Procuring Entity to give possession in accordance with the terms of this clause, the Procuring Entity's Representative shall give the Contractor a Contract Time Extension and certify such sum as fair to cover the cost incurred, which sum shall be paid by Procuring Entity.

4.2. If possession of a portion is not given by the above date, the Procuring Entity will be deemed to have delayed the start of the relevant activities. The resulting adjustments in contract time to address such delay may be addressed through contract extension provided under Annex "E" of the 2016 revised IRR of RA No. 9184.

4. The Contractor's Obligations

The Contractor shall employ the key personnel named in the Schedule of Key Personnel indicating their designation, in accordance with **ITB** Clause 10.3 and specified in the **BDS**, to carry out the supervision of the Works.

The Procuring Entity will approve any proposed replacement of key personnel only if their relevant qualifications and abilities are equal to or better than those of the personnel listed in the Schedule.

5. Performance Security

- 5.1. Within ten (10) calendar days from receipt of the Notice of Award from the Procuring Entity but in no case later than the signing of the contract by both parties, the successful Bidder shall furnish the performance security in any of the forms prescribed in Section 39 of the 2016 revised IRR.
- 5.2. The Contractor, by entering into the Contract with the Procuring Entity, acknowledges the right of the Procuring Entity to institute action pursuant to RA No. 3688 against any subcontractor be they an individual, firm, partnership, corporation, or association supplying the Contractor with labor, materials and/or equipment for the performance of this Contract.

6. Site Investigation Reports

The Contractor, in preparing the Bid, shall rely on any Site Investigation Reports referred to in the SCC supplemented by any information obtained by the Contractor.

7. Warranty

- 7.1. In case the Contractor fails to undertake the repair works under Section 62.2.2 of the 2016 revised IRR, the Procuring Entity shall forfeit its performance security, subject its property(ies) to attachment or garnishment proceedings, and perpetually disqualify it from participating in any public bidding. All payables of the GOP in his favor shall be offset to recover the costs.
- 7.2. The warranty against Structural Defects/Failures, except that occasioned-on force majeure, shall cover the period from the date of issuance of the Certificate of Final Acceptance by the Procuring Entity. Specific duration of the warranty is found in the SCC.

8. Liability of the Contractor

Subject to additional provisions, if any, set forth in the SCC, the Contractor's liability under this Contract shall be as provided by the laws of the Republic of the Philippines.

If the Contractor is a joint venture, all partners to the joint venture shall be jointly and severally liable to the Procuring Entity.

9. Termination for Other Causes

Contract termination shall be initiated in case it is determined *prima facie* by the Procuring Entity that the Contractor has engaged, before, or during the implementation of the contract, in unlawful deeds and behaviors relative to contract acquisition and implementation, such as, but not limited to corrupt, fraudulent, collusive, coercive, and obstructive practices as stated in ITB Clause 4.

10. Dayworks

Subject to the guidelines on Variation Order in Annex “E” of the 2016 revised IRR of RA No. 9184, and if applicable as indicated in the SCC, the Dayworks rates in the Contractor’s Bid shall be used for small additional amounts of work only when the Procuring Entity’s Representative has given written instructions in advance for additional work to be paid for in that way.

11. Program of Work

11.1. The Contractor shall submit to the Procuring Entity’s Representative for approval the said Program of Work showing the general methods, arrangements, order, and timing for all the activities in the Works. The submissions of the Program of Work are indicated in the SCC.

11.2. The Contractor shall submit to the Procuring Entity’s Representative for approval an updated Program of Work at intervals no longer than the period stated in the SCC. If the Contractor does not submit an updated Program of Work within this period, the Procuring Entity’s Representative may withhold the amount stated in the SCC from the next payment certificate and continue to withhold this amount until the next payment after the date on which the overdue Program of Work has been submitted.

12. Instructions, Inspections and Audits

The Contractor shall permit the GOP or the Procuring Entity to inspect the Contractor’s accounts and records relating to the performance of the Contractor and to have them audited by auditors of the GOP or the Procuring Entity, as may be required.

13. Advance Payment

The Procuring Entity shall, upon a written request of the Contractor which shall be submitted as a Contract document, make an advance payment to the Contractor in an amount not exceeding fifteen percent (15%) of the total contract price, to be made in lump sum, or at the most two installments according to a schedule specified in the SCC, subject to the requirements in Annex “E” of the 2016 revised IRR of RA No. 9184.

14. Progress Payments

The Contractor may submit a request for payment for Work accomplished. Such requests for payment shall be verified and certified by the Procuring Entity’s Representative/Project Engineer. Except as otherwise stipulated in the SCC, materials and equipment delivered on the site but not completely put in place shall not be included for payment.

15. Operating and Maintenance Manuals

- 15.1. If required, the Contractor will provide “as built” Drawings and/or operating and maintenance manuals as specified in the **SCC**.
- 15.2. If the Contractor does not provide the Drawings and/or manuals by the dates stated above, or they do not receive the Procuring Entity’s Representative’s approval, the Procuring Entity’s Representative may withhold the amount stated in the **SCC** from payments due to the Contractor.

Section V. Special Conditions of Contract

Special Conditions of Contract

GCC Clause	
2	The Intended Completion Date is <i>one hundred twenty (120) calendar days which will commence within three calendar days from receipt of the Notice to Proceed.</i>
4.1	<i>three days from the receipt of the Notice to proceed</i>
6	The site investigation reports are: <i>Affidavit of Site Inspection</i>
7.2	<i>[In case of permanent structures, such as buildings of types 4 and 5 as classified under the National Building Code of the Philippines and other structures made of steel, iron, or concrete which comply with relevant structural codes (e.g., DPWH Standard Specifications), such as, but not limited to, steel/concrete bridges, flyovers, aircraft movement areas, ports, dams, tunnels, filtration and treatment plants, sewerage systems, power plants, transmission and communication towers, railway system, and other similar permanent structures:] Fifteen (15) years.</i>
10	No dayworks are applicable to the contract.
11.1	The Contractor shall submit the Program of Work to the Procuring Entity's Representative for approval within <i>ten (10) days</i> of delivery of the Notice of proceed.
11.2	The Contractor shall submit to the Procuring Entity's Representative for approval an updated Program of Work every week, the Procuring Entity may withhold the amount of Five thousand pesos only if the contractor failed to Submit the updated program.
13	The amount of the advance payment is <i>15% of the total contract price.</i>
14	<i>The Contractor may submit a request for payment for Work accomplished. Such requests for payment shall be verified and certified by the Procuring Entity's Representative/Project Engineer.</i>
15.1	The date by which operating and maintenance manuals are required is NOT LATER THAN 2 WEEKS AFTER THE COMPLETION OF THE PROJECT The date by which "as built" drawings are required is NOT LATER THAN 2 WEEKS AFTER THE COMPLETION OF THE PROJECT
15.2	The Procuring Entity may withhold the payment of the remaining balance of the Contractor failed to submit or produce "as built" drawings.

Section VI. Specifications



Republic of the Philippines
Early Childhood Care and Development Council

4th Floor Belvedere Tower, No. 15 San Miguel Ave., Ortigas Center, Pasig City 1605
 Telephone & fax: (02) 571-4615 / 571-6590 / 571-6833 / 571-8041 email address: info@eccdcouncil.gov.ph

PROJECT: NATIONAL CHILD DEVELOPMENT CENTER		MUNICIPAL MAYOR: HON. ROVELYN D. BAGABALDO			
IMPLEMENTING UNIT: LOCAL GOVERNMENT UNIT OF PAETE, LAGUNA		BUDGET ALLOCATION: Php 2,499,544.48 - Total Budget Allocation / Approved Budget for Contract			
PROJECT LOCATION: Paete, Laguna		MUNICIPAL ENGINEER: NOEL T. VIRAY			
A. AREA OF FOCUS (Project / Program / Component / Activity) ECCD Council – National Child Development Center Project					
B. PURPOSE/OBJECTIVE(S) 1. To identify/evaluate the difference between the proposed Program of Works (POW) of LGU Paete, Laguna for the proposed project with the existing program of works using the revised Plans and Specifications for the National Child Development Center.					
C. FINDINGS 1. Findings for the proposed POW with respect to the existing POW of the Council listed as follows:					
ITEM	DESCRIPTION	SUBMITTED POW	VARIANCE	REMARKS	APPROVED POW
I. DIRECT COST					
1.0	GENERAL REQUIREMENTS	75,000.00	(36,500.00)	Materials and labor cost are included	40,500.00
2.0	Earthworks	34,831.23	22,845.52		37,676.74
3.0	Concrete Works (includes ramp on RR)	885,103.00	12,671.25		897,774.25
4.0	Formworks	80,780.00	(2,540.40)		78,239.60
5.0	Reinforcing Steel Bars	703,405.17	(509,136.55)	over priced material cost	150,228.64
6.0	Masonry Works	213,811.00	(50,440.78)	Plastering works and plant beams are included	181,370.22
7.0	Doors & Windows	20,300.00	106,511.00	security grilles included	226,811.00
8.0	Steel Works	20,580.00	208,593.00		309,173.00
9.0	Roofing Works	255,413.80	50,833.80		306,247.60
10.0	Carpentry Works	46,902.50	59,735.00		106,637.50
11.0	Painting Works	28,794.00	25,992.50		54,786.50
12.0	Tile Works	60,374.00	(29,881.20)		30,492.80
13.0	Electrical Works	99,585.00	15,614.25		115,199.25
14.0	Plumbing & Sanitary Works	15,000.00	54,556.25	Concrete drain pipes included	69,556.25
15.0	CHB Septic Vault (Three Chamber - 2.30 x 4.75 x 2.15m)	120,585.78	(32,695.74)		77,890.04
16.0	Others	-	-4,942.50		-4,942.50
	Sub-Total	1,794,145.48	157,099.22		1,951,244.70
II. INDIRECT COST					
	Overhead Expenses (10%)	143,514.54	12,567.94	8% of Direct Cost	156,082.48
	Contingencies (5%)	53,827.25	4,722.96	2% of Direct Cost	58,550.21
	Miscellaneous (2%)	17,942.91	1,570.90	1% of Direct Cost	19,513.81
	Contractors Profit (10%)	179,414.55	15,708.92	30% of Direct cost	195,123.47
	Sub-Total	384,712.01	34,569.72		419,281.73
	III. TAX (5%)	109,442.87	5,583.08	5% of Direct Cost + indirect Cost	115,025.95
	Sub-Total	109,442.87	5,583.08		115,025.95
	IV. TOTAL CONSTRUCTION COST (I + II + III)	2,288,300.36	201,261.46		2,489,561.82
D. FINDINGS 1. Used percentages in the computation of indirect cost and VAT is the same with the computation of the standard POW of ECCD Council. 2. Some item of works based on the standard POW are not included in the submitted Program of Works of LGU Paete, Laguna.					
E. REMARKS 1. Needs additional funds for the completion of the building. Release of such funds will depend on the result of the procurement to determine if savings were generated. LGU of Paete, Laguna must submit to the Council copy of Resolution to Award prior to the release of such funds if no contract has been made.					
PREPARED BY: JOHN LIMEN S. MIRANDA NCCD Project Engineer			NOTED/RECEIVED BY: RODRIGUEZ, ISIP Head, NCCD Project Unit/ Finance & Budget		
22-Sep-20 DATE					



Republic of the Philippines
Early Childhood Care and Development Council

4th Floor Belvedere Tower, No. 15 San Miguel Ave., Ortigas Center, Pasig City 1605
 Telephone & fax: (02) 571-4615 / 571-6590 / 571-6833 / 571-8041 email address: info@eccdcouncil.gov.ph

APPROVED PROGRAM OF WORKS							
NAME OF PROJECT:		Date:		22-Sep-20			
Proposed Construction of National Child Development Center		Budget Allocation/ Approved Budget for Contract:		Source of Funds: ECCD Council			
		Completion Period:		Php2,499,544.46 - Total Budget Allocation/Approved Budget for Contract:			
		Minimum Required Manpower:		120 Calendar Days			
LOCATION:		Project Engineer		Materials Engr.		Minimum Required Equipment:	
Paete, Laguna		Carpenter		Steelman		1-Bagger Cem. Mixer	
		Welder		Painter		Concrete Vibrator	
		General Foreman		Tinsmith		Welding Machine	
						Bar Cutter	
						Generator	
ITEM	DESCRIPTION	% OF TOTAL	UNIT	QUANTITY	UNIT COST	TOTAL COST	REMARKS
I. DIRECT COST							
1.0	GENERAL REQUIREMENTS	0.016	lot	1.00	40,500.00	40,500.00	
2.0	Earthworks	0.015	sq.m	124.00	303.84	37,676.74	
3.0	Concreting Works (includes ramp on fill)	0.079	cu.m	34.70	5,699.83	197,772.25	
4.0	Formworks	0.031	sq.m.	130.33	600.39	78,249.60	
5.0	Reinforcing Steel Bars	0.060	kg	2,751.66	54.63	150,328.66	with rebars on slab on fill
6.0	Masonry Works (with plant boxes)	0.073	sq.m	223.32	812.14	181,370.02	w/ plant boxes
7.0	Doors & Windows	0.091	lot	1.00	226,811.00	226,811.00	with security grilles
8.0	Steel Works	0.132	kgs	2,680.00	122.83	329,173.00	with steel trellis
9.0	Roofing Works	0.083	sq. m.	210.67	979.01	206,247.60	with polycarbonate
10.0	Carpentry Works	0.043	sq.m	163.00	654.59	106,697.50	Metal Furring on Marine Plywood
11.0	Painting Works	0.040	sq. m.	609.65	162.86	99,287.50	
12.0	Tile Works	0.012	sq.m	28.41	1,073.31	30,492.80	
13.0	Electrical Works	0.030	lot	1.00	75,199.25	75,199.25	
14.0	Plumbing & Sanitary Works	0.028	lot	1.00	69,606.25	69,606.25	w/ concrete drain pipe
15.0	CHB Septic Vault (Three Chamber - 2.30m x 3.0m x 2.15m) & Catch Basin (0.7 x 0.7 x 0.6)	0.031	lot	1.00	77,890.03	77,890.03	
16.0	Others	0.018	lot	1.00	43,942.50	43,942.50	
Sub-Total						1,951,244.70	
II. INDIRECT COST (22%)							
Overhead Expenses (8%)		0.062				156,099.58	
Contingencies (3%)		0.023				58,537.34	
Miscellaneous (1%)		0.008				19,512.45	
Contractors Profit (10%)		0.078				195,124.47	
Sub-Total						429,273.83	
III. TAX (5%)							
Sub-Total						119,025.93	As per DPWH D.O. 197, series of 2016 tax shall be 5% of EDC, OCM and profit.
IV. TOTAL CONSTRUCTION COST (I+II+III)						2,499,544.46	



Republic of the Philippines
Early Childhood Care and Development Council

4th Floor, Belvedere Tower, No. 15 San Miguel Ave., Ortigas Center, Pasig City 1605
 Telephone & fax: (02) 571-4615 / 571-6590 / 571-6833 / 571-8041 email address: info@eccdcouncil.gov.ph

Proposed Construction of National Child Development Center

Project Name: Proposed Construction of National Child Development Center
 Subject APPROVED PROGRAM OF WORKS

ITEM NO.	DESCRIPTION	UNIT	QUANTITY	UNIT COST		TOTAL COST			GRAND TOTAL
				MATERIAL	LABOR	MATERIAL	LABOR		
1.0	GENERAL REQUIREMENTS								
	Mobilization/Temporary Facilities/Demobilization / Safety & Health Program / Standard Billboard	lot	1.00	30,000.00	10,500.00	30,000.00	10,500.00	= P	40,500.00
	Sub-total							= P	40,500.00
	Unit Cost =	Php.	40,500.00 /	1.00 lot	=	Php40,500.00	/ lot		
	Total Item Cost =	Php.	40,500.00 x	1.00 lot	=	Php40,500.00	/ lot		
2.0	Earthworks	sq.m	124.00						
	Clearing and Grubbing	sq.m	124.00	-	25.00	-	3,100.00	= P	3,100.00
	Structural Excavation	cu.m	44.83	-	220.00	-	9,863.04	= P	9,863.04
	Backfilling and Compaction	cu.m	30.40	-	50.00	-	1,520.10	= P	1,520.10
	Gravel Berding G-1	cu.m	15.29	605.00	181.50	9,248.03	2,774.41	= P	12,022.44
	Select Fill	cu.m	24.80	165.00	49.50	4,092.00	1,227.60	= P	5,319.60
	Soil Poisoning	sq.m	272.80	16.50	4.95	4,501.20	1,350.36	= P	5,851.56
	Sub-Total							= P	37,676.74
	Unit Cost =	Php.	37,676.74 /	124.00 sq.m	=	Php303.84	/ sq.m		
	Total Item Cost =	Php.	303.84 x	124.00 sq.m	=	Php37,676.74	/ sq.m		
3.0	Concreting Works (includes ramp on hill)	cu.m	34.70						
	Portland Cement	bag	313.00	240.00	72.00	75,120.00	22,536.00	= P	97,656.00
	Washed Sand	cu.m	17.50	850.00	255.00	14,875.00	4,462.50	= P	19,337.50
	Crushed Gravel	cu.m	34.75	1,050.00	315.00	36,487.50	10,946.25	= P	47,433.75
	Cement Additive (Colored Cement Green)	kg	90.00	285.00	85.50	25,650.00	7,695.00	= P	33,345.00
	Sub-Total							= P	197,772.25
	Unit Cost =	Php.	197,772.25 /	34.70 cu.m	=	Php5,699.83	/ cu.m		
	Total Item Cost =	Php.	5,699.83 x	34.70 cu.m	=	Php197,772.25	/ cu.m		
4.0	Formworks	sq.m	130.33						
	Plywood Ordinary, 1/4" x 4' x 8'	pc	23.00	400.00	120.00	9,200.00	2,760.00	= P	11,960.00
	Caco Lumber	bd. Ft.	2,216.00	22.00	6.60	48,752.00	14,625.60	= P	63,377.60
	CWN, Assorted	kg	32.00	70.00	21.00	2,240.00	672.00	= P	2,912.00
	Sub-Total							= P	78,249.60
	Unit Cost =	Php.	78,249.60 /	130.33 sq.m	=	Php600.39	/ sq.m		
	Total Item Cost =	Php.	600.39 x	130.33 sq.m	=	Php78,249.60	/ sq.m		
5.0	Reinforcing Steel Bars	kg	2,751.66						
	Deformed Round Bars, Grade 40	kg	2,751.66	40.60	12.18	111,717.43	33,515.23	= P	145,232.66
	G.I. Tie Wire	kg	56.00	70.00	21.00	3,920.00	1,176.00	= P	5,096.00
	Sub-Total							= P	150,328.66
	Unit Cost =	Php.	150,328.66 /	2,751.66 kg	=	Php54.63	/ kg		
	Total Item Cost =	Php.	54.63 x	2,751.66 kg	=	Php150,328.66	/ kg		
6.0	Masonry Works (with plant boxes)	sq.m	221.32						
	Masonry Wall	sq.m	221.32						
	CHB 6" thk	pc	2,292.00	15.00	4.50	41,880.00	12,564.00	= P	54,444.00
	Portland Cement	bag	112.00	240.00	72.00	26,880.00	8,064.00	= P	34,944.00
	Washed Sand	cu.m	10.00	850.00	255.00	8,500.00	2,550.00	= P	11,050.00
	10mm x 6m RSB	kg	296.00	40.60	12.18	12,017.60	3,605.28	= P	15,622.88
	G.I. Tie Wire	kg	6.00	70.00	21.00	420.00	126.00	= P	546.00

	Plain Cement Plaster	sq.m	446.65										
	Portland Cement	bag	148.00	240.00	72.00	35,520.00	10,656.00	=	P			46,176.00	
	Washed Sand	cu.m	15.00	850.00	255.00	12,750.00	3,825.00	=	P			16,575.00	
	CHB Toilet Partition	sq.m	1.51										
	CHB 4" thk	pc	19.00	14.00	4.20	266.00	79.80	=	P			345.80	
	Portland Cement	bag	1.00	240.00	72.00	240.00	72.00	=	P			312.00	
	Washed Sand	cu.m	1.00	850.00	255.00	850.00	255.00	=	P			1,105.00	
	10mm x 6m RSB	kg	3.00	40.60	12.18	121.80	36.54	=	P			158.34	
	G.I. Tie Wire	kg	1.00	70.00	21.00	70.00	21.00	=	P			91.00	
	Sub-Total												= P 181,370.02
	Unit Cost =	Php.	181,370.02 /	223.32	sq.m	=	Php812.14	/	sq.m				
	Total Item Cost =	Php.	812.14 x	223.32	sq.m	=	Php181,370.02						
7.0	Doors & Windows	lot	1.00										
	D - 1, 2-0.75 x 2.1m Double swing Panel Door (with .25m x .75m 6mm thick clear glass & 10mm square bar) on 150mm wooden jamb complete with Accessories (with 1-HD door knob, 1-HD double cylinder dead bolt keyed on both sides & 1 HD foot bolt)	set	1.00	9,450.00	2,835.00	9,450.00	2,835.00	=	P			12,285.00	
	D - 2, 1.0 x 2.1 Single Swing Panel Door (with .25m x .75m - 6mm thick clear glass & 10mm square bar) on 150mm wooden jamb complete with Accessories (with 1-HD door knob, 1-HD double cylinder dead bolt keyed on both sides & 1 HD foot bolt)	set	1.00	6,620.00	1,986.00	6,620.00	1,986.00	=	P			8,606.00	
	D - 3, Adult Toilet - Hollow Core Wooden Flush Type Door 0.70m x 2.10m on 150mm Wooden Jamb complete with Accessories (with 1-HD keyless door knob)	set	1.00	3,870.00	1,161.00	3,870.00	1,161.00	=	P			5,031.00	
	D - 5, Kids Toilet - Phenolic Doors or Wooden Louver Doors (0.60m x 1.0m) complete with Accessories (with HD door lock)	set	2.00	1,000.00	300.00	2,000.00	600.00	=	P			2,600.00	
	W - 1, 2.24m x 1.2 m Alum frame (Powder Coated Finish) awning type window (9 panels) with 1/4" thk Clear Glass complete with accessories	set	8.00	14,250.00	4,275.00	114,000.00	34,200.00	=	P			148,200.00	
	W - 2, 0.6x0.6 m Alum frame (Powder Coated Finish) awning type window with 1/4" thk Clear Glass complete with accessories	set	3.00	2,480.00	744.00	7,440.00	2,232.00	=	P			9,672.00	
	D-4, 1.0 x 2.1 PVC Accordion Type Door - complete with accessories	set	1.00	7,060.00	2,118.00	7,060.00	2,118.00	=	P			9,178.00	
	Security Grills (2.24m x 1.2m) - 12 mm Square bar on 1 1/2" flat bar or 1 1/2" x 1 1/2" angle bar	set	8.00	2,720.00	952.00	21,760.00	7,616.00	=	P			29,376.00	
	Security Grills (0.6m x 0.6m) - 12 mm Square bar on 1 1/2" flat bar or 1 1/2" x 1 1/2" angle bar	set	3.00	460.00	161.00	1,380.00	483.00	=	P			1,863.00	
	Sub-Total												= P 226,811.00
	Unit Cost =	Php.	226,811.00 /	1.00	lot	=	Php226,811.00	/	lot				
	Total Item Cost =	Php.	226,811.00 x	1.00	lot	=	Php226,811.00						
8.0	Steel Works	kgs	2,680.00										
	L 65 x 65 x 6mm	pcs	81.00	1,440.00	432.00	116,640.00	34,992.00	=	P			151,632.00	
	L 50 x 50 x 4mm	pcs	59.00	735.00	220.50	43,365.00	13,009.50	=	P			56,374.50	
	L C 50 x 75 x 15 x 1.5mm	pcs	52.00	615.00	184.50	31,980.00	9,594.00	=	P			41,574.00	
	Cleats 6mmx75x75	pc	4.00	1,745.00	523.50	6,980.00	2,094.00	=	P			9,074.00	
	Plain Round Bar (sag rod) 10mmØ x 6m	pcs	5.00	180.00	54.00	900.00	270.00	=	P			1,170.00	
	Turn Buckle 12 mmØ	pcs	8.00	80.00	24.00	640.00	192.00	=	P			832.00	
	Plain Round Bar 12mmØ x 6m	pcs	8.00	260.00	78.00	2,080.00	624.00	=	P			2,704.00	
	Anchor Bolt with Nuts and Washer, 12mmØ x 50mm x 300mm	pcs	80.00	31.00	9.30	2,480.00	744.00	=	P			3,224.00	
	Anchor Bolt with Nuts and Washer, 10mmØ x 50mm x 200mm	pcs	80.00	15.00	4.50	1,200.00	360.00	=	P			1,560.00	
	Steel Plate 1.20m x 2.40m x 10mm	pcs	1.00	9,600.00	2,880.00	9,600.00	2,880.00	=	P			12,480.00	
	Steel Plate 1.20m x 2.40m x 6mm	pcs	2.50	5,800.00	1,740.00	14,500.00	4,350.00	=	P			18,850.00	
	50x100 x 1.5mm tubular steel for trellis	pcs	10.00	1,100.00	330.00	11,000.00	3,300.00	=	P			14,300.00	
	Stainless Steel Railings for ramp (2"Ø)	pcs	1.00	2,875.00	862.50	2,875.00	862.50	=	P			3,737.50	
	Welding Rod	kg	69.00	80.00	24.00	5,520.00	1,656.00	=	P			7,176.00	
	Primer, Zinc Chromate	gal	5.00	690.00	207.00	3,450.00	1,035.00	=	P			4,485.00	
	Sub-Total												= P 329,173.00
	Unit Cost =	Php.	329,173.00 /	2,680.00	kgs	=	Php122.83	/	kgs				
	Total Item Cost =	Php.	122.83 x	2,680.00	kgs	=	Php329,173.00						

Proposed Construction of Malabon Child Development Center									
9.0 Roofing Works	sq. m.	210.67							
Long-Span Roofing, Ordinary Corrugated, Pre-Painted, 1220mm x 0.4mm thk	m	246.00	440.50	132.15	108,363.00	32,508.90	=	P	140,871.90
Ridge Roll, Pre-Painted, Ordinary, 0.610m x 2.440m x 0.4mm thk	pc	21.00	650.00	195.00	13,650.00	4,095.00	=	P	17,745.00
Gutter, Pre-Painted, Spanish, 0.610m x 2.440m x 0.4mm thk	pc	27.00	650.00	195.00	17,550.00	5,265.00	=	P	22,815.00
Roof Sealant	l	6.00	260.00	78.00	1,560.00	468.00	=	P	2,028.00
Tekscrew 2-1/2"	pc	1,686.00	1.50	0.45	2,529.00	758.70	=	P	3,287.70
Polycarbonate (4ft x 16ft) complete with accessories	sq./ft.	1.70.00	88.24	26.47	15,000.00	4,500.00	=	P	19,500.00
Sub-Total							=	P	206,247.60
Unit Cost =	Php.	206,247.60	/	210.67	sq. m.	=	Php979.01	/	sq. m.
Total Item Cost =	Php.	979.01	x	210.67	sq. m.	=	Php206,247.60		
10.0 Carpentry Works	sq.m	163.00							
Metal Furring (interior & exterior)	sq.m	163.00							
Furring Channel (spaced @ 0.6m)	pc	59.00	190.00	39.00	7,670.00	2,301.00	=	P	9,971.00
Carrying Channel (Spaced @ 1.2 m)	pc	33.00	190.00	45.00	4,950.00	1,485.00	=	P	6,435.00
Wall Angle	pc	38.00	95.00	28.50	3,610.00	1,083.00	=	P	4,693.00
W Clip	pc	274.00	4.50	1.35	1,233.00	369.90	=	P	1,602.90
Suspension Clip & Rod Joiner	pc	141.00	19.00	5.70	2,679.00	803.70	=	P	3,482.70
Steel Angle	pc	141.00	48.00	14.40	6,768.00	2,030.40	=	P	8,798.40
Hanger Rod # 8	lm	141.00	18.00	5.40	2,538.00	761.40	=	P	3,299.40
Blind Rivets	pc	576.00	0.75	0.23	432.00	129.60	=	P	561.60
Concrete Nail (1")	kg	7.00	70.00	21.00	140.00	42.00	=	P	182.00
Coiling Boards (interior & exterior)	sq.m	163.00							
Marine Plywood 1/4" x 4' x 8'	pc	59.00	435.00	130.50	25,665.00	7,699.50	=	P	33,364.50
Fascia Board, Fiber Cement 1/2" x 16" x 8'	pc	23.00	210.00	63.00	4,830.00	1,449.00	=	P	6,279.00
Ceiling Vent 1" x 12" x 4" with Screen	pc	6.00	260.00	78.00	1,560.00	468.00	=	P	2,028.00
Cabinets									
Built-in Overhead Cabinet @ Pantry (1.55m x 1.05m x .35m)	set	1.00	3,500.00	1,050.00	3,500.00	1,050.00	=	P	4,550.00
Lockable Full-Height Storage Cabinet (1.7m x 2.7m x 0.4m)	set	1.00	6,500.00	1,950.00	6,500.00	1,950.00	=	P	8,450.00
Teacher's Nook	set	1.00	10,400.00	2,600.00	10,400.00	2,600.00	=	P	13,000.00
Sub-Total							=	P	106,697.50
Unit Cost =	Php.	106,697.50	/	163.00	sq.m	=	Php654.59	/	sq.m
Total Item Cost =	Php.	654.59	x	163.00	sq.m	=	Php106,697.50		
11.0 Painting Works	sq. m.	609.65							
Concrete surfaces	sq.m	476.65							
Neutralizer	gal	6.00	270.00	81.00	1,620.00	486.00	=	P	2,106.00
Latex, Flat	gal	24.00	585.00	175.50	14,040.00	4,212.00	=	P	18,252.00
Latex, Semi Gloss	gal	24.00	625.00	187.50	15,000.00	4,500.00	=	P	19,500.00
Acrl Color	qrt	13.00	230.00	69.00	2,990.00	897.00	=	P	3,887.00
Masonry Putty	gal	24.00	580.00	174.00	13,920.00	4,176.00	=	P	18,096.00
Wood surfaces	sq.m	163.00							
Enamel, Flatwall	gal	12.00	680.00	204.00	8,160.00	2,448.00	=	P	10,608.00
Glazing Putty	gal	12.00	580.00	174.00	6,960.00	2,088.00	=	P	9,048.00
Enamel, Semi Gloss	gal	12.00	745.00	223.50	8,940.00	2,682.00	=	P	11,622.00
Paint Thinner	gal	13.00	365.00	109.50	4,745.00	1,423.50	=	P	6,168.50
Sub-Total							=	P	99,287.50
Unit Cost =	Php.	99,287.50	/	609.65	sq. m.	=	Php162.86	/	sq. m.
Total Item Cost =	Php.	162.86	x	609.65	sq. m.	=	Php99,287.50		
12.0 Tile Works	sq.m	28.41							
Wall (Toilet)	sq.m	20.16							
Glazed Wall Tiles 20cm x 30cm	pc	370.00	37.00	11.30	13,690.00	4,107.00	=	P	17,797.00
Tile Adhesive 25 kg/bag	bag	4.00	330.00	99.00	1,320.00	396.00	=	P	1,716.00
Tile Trim 6mm	pc	7.00	110.00	33.00	770.00	231.00	=	P	1,001.00
Tile Grout 5 kg/bag	bag	3.00	165.00	49.50	495.00	148.50	=	P	643.50
Flooring (Toilet)	sq.m	8.25							
UnGlazed Tiles 20cm x 20cm	pc	227.00	28.00	8.40	6,356.00	1,905.80	=	P	8,261.80
Tile Adhesive 25 kg/bag	bag	2.00	330.00	99.00	660.00	198.00	=	P	858.00
Tile Grout 5 kg/bag	bag	1.00	165.00	49.50	165.00	49.50	=	P	214.50
Sub-Total							=	P	30,492.80
Unit Cost =	Php.	30,492.80	/	28.41	sq.m	=	Php1,073.31	/	sq.m
Total Item Cost =	Php.	1,073.31	x	28.41	sq.m	=	Php30,492.80		

13.0 Electrical Works		lot	1.00									
Roughing-ins												
Electrical Conduit uPVC, 15mmØ with fittings & clamps	pcs	63.00	70.00	21.00	4,410.00	1,323.00	=	P	5,733.00			
20 mm diam service entrance cap with rsc pipe	set	1.00	280.00	84.00	280.00	84.00	=	P	364.00			
4x4 junction box	pcs	30.00	20.00	6.00	600.00	180.00	=	P	780.00			
2x4 utility box	pcs	25.00	35.00	10.50	875.00	262.50	=	P	1,137.50			
Grounding Rod, 2.4m x 16mm dia.	pc	1.00	185.00	55.50	185.00	55.50	=	P	240.50			
Wires & Fatures												
3.5 mm2 THW Wire, Stranded	mtrs	472.50	35.00	10.50	16,537.50	4,961.25	=	P	21,498.75			
8.0 mm2 THW Wire, Stranded	mtrs	21.00	85.00	25.50	1,785.00	535.50	=	P	2,320.50			
Duplex convenience outlet with cover	sets	10.00	300.00	90.00	3,000.00	900.00	=	P	3,900.00			
Single convenience outlet	sets	4.00	135.00	40.50	540.00	162.00	=	P	702.00			
2-gang switch flush type with switch plate	sets	3.00	170.00	51.00	510.00	153.00	=	P	663.00			
3-gang switch flush type with switch plate	sets	1.00	200.00	60.00	200.00	60.00	=	P	260.00			
Ceiling Receptacle	pcs	5.00	50.00	15.00	250.00	75.00	=	P	325.00			
FL 2 x 40W Recessed Type with Luminare 12" x 48"	sets	9.00	1,500.00	450.00	13,500.00	4,050.00	=	P	17,550.00			
LED Bulb (7Watts)	pcs	5.00	650.00	195.00	3,250.00	975.00	=	P	4,225.00			
Panel Box, Flush Type, 6Branches	set	1.00	1,550.00	465.00	1,550.00	465.00	=	P	2,015.00			
Orbit Fan	set	2.00	1,320.00	396.00	2,640.00	792.00	=	P	3,432.00			
Wall Fan	set	4.00	1,320.00	396.00	5,280.00	1,584.00	=	P	6,864.00			
Circuit Breaker, 40A 2P	pcs	1.00	480.00	144.00	480.00	144.00	=	P	624.00			
Circuit Breaker, 20A 2P	pcs	4.00	360.00	108.00	1,440.00	432.00	=	P	1,872.00			
Electrical tape	pcs	8.00	45.00	13.50	360.00	108.00	=	P	468.00			
Sub-Total										=	P	75,199.25
Unit Cost =		Php.	75,199.25 /	1.00 lot	=	Php75,199.25	/	lot				
Total Item Cost =		Php.	75,199.25 x	1.00 lot	=	Php75,199.25						
14.0 Plumbing & Sanitary Works												
Plumbing												
Water Closet 1.6gpf with Accessories	sets	1.00	6,100.00	1,525.00	6,100.00	1,525.00	=	P	7,625.00			
Water Closet (baby toilet) with Accessories	sets	2.00	4,260.00	1,065.00	8,520.00	2,130.00	=	P	10,650.00			
Lavatory, Pedestal Type with Accessories	sets	1.00	3,465.00	866.25	3,465.00	866.25	=	P	4,331.25			
S.S.Floor Drain 4" x 4"	sets	3.00	120.00	30.00	360.00	90.00	=	P	450.00			
solvent cement	can	3.00	170.00	42.50	510.00	127.50	=	P	637.50			
S.S. faucet (4" - wallmounted)	pcs	3.00	580.00	145.00	1,740.00	435.00	=	P	2,175.00			
1/2" diam uPVC elbow	pcs	19.00	27.00	6.75	513.00	128.25	=	P	641.25			
1/2" diam uPVC pipe	pcs	6.00	150.00	37.50	900.00	225.00	=	P	1,125.00			
S.S. Grab Rail 1-1/2"Ø	set	1.00	1,630.00	407.50	1,630.00	407.50	=	P	2,037.50			
Gate Valve, 1/2"Ø	set	1.00	310.00	77.50	310.00	77.50	=	P	387.50			
1/2" uPVC Coupling	pcs	3.00	18.00	4.50	54.00	13.50	=	P	67.50			
Tissue Holder	pcs	3.00	280.00	70.00	840.00	210.00	=	P	1,050.00			
Soap Holder	pcs	1.00	280.00	70.00	280.00	70.00	=	P	350.00			
teflon tape	roll	2.00	20.00	5.00	40.00	10.00	=	P	50.00			
Liquid Soap Container (wall Mounted)	pcs	1.00	610.00	152.50	610.00	152.50	=	P	762.50			
Stainless Towel Holder (wall Mounted)	pcs	2.00	1,050.00	262.50	2,100.00	525.00	=	P	2,625.00			
Mirror (2.5'x5.5')	sq. ft.	13.75	150.00	45.00	2,062.50	618.75	=	P	2,681.25			
Mirror (1.2'x2.5')	sq. ft.	3.00	150.00	45.00	450.00	135.00	=	P	585.00			
Sanitary												
4" diam clean out	pcs	2.00	420.00	105.00	840.00	210.00	=	P	1,050.00			
8" diam concrete drain pipe	pcs	36.00	500.00	125.00	18,000.00	4,500.00	=	P	22,500.00			
3" diam uPvc pipe (downspout)	pcs	10.00	500.00	125.00	5,000.00	1,250.00	=	P	6,250.00			
3" diam uPVC elbow 90o	pcs	21.00	60.00	15.00	1,260.00	315.00	=	P	1,575.00			
Sub-Total										=	P	69,606.25
Unit Cost =		Php.	69,606.25 /	1.00 lot	=	Php69,606.25	/	lot				
Total Item Cost =		Php.	69,606.25 x	1.00 lot	=	Php69,606.25						
15.0 CHB Septic Vault (Three Chamber - 2.30m x 3.0m x 2.15m) & Catch Basin (0.7 x 0.7 x 0.6)												
Clearing and Grubbing	sq.m	11.31	-	25.00	-	282.75	=	P	282.75			
Excavation	cu.m	17.48	-	220.00	-	3,845.82	=	P	3,845.82			
Cement	bags	99.00	240.00	72.00	23,760.00	7,128.00	=	P	30,888.00			
Sand	cu.m	11.50	850.00	255.00	9,775.00	2,932.50	=	P	12,707.50			
Crushed Gravel	cu.m	2.19	1,050.00	315.00	2,300.55	690.17	=	P	2,990.72			
Deformed Round Bars, Grade 40	kgs	254.53	40.60	12.18	10,334.03	3,102.21	=	P	13,434.25			
Tie Wire	kgs	7.00	70.00	21.00	490.00	147.00	=	P	637.00			
uPVC Sanitary Pipe 4"Ø	pc	1.00	620.00	186.00	620.00	186.00	=	P	806.00			
uPVC Elbow 90o x 4"Ø	pc	2.00	110.00	33.00	220.00	66.00	=	P	286.00			
uPVC Tee 4" x 4"	pc	6.00	160.00	48.00	960.00	288.00	=	P	1,248.00			
6" CHB	pc	552.00	15.00	4.50	8,280.00	2,484.00	=	P	10,764.00			
Sub-Total										=	P	77,890.03
Unit Cost =		Php.	77,890.03 /	1.00 lot	=	Php77,890.03	/	lot				
Total Item Cost =		Php.	77,890.03 x	1.00 lot	=	Php77,890.03						

16.0 Others	lot	1.00							
Handwashing Facility @ toilet (granite tiles for top & Splash Board with 3/4" thick marine plywood for cover & doors) - complete with accessories	lot	1.00	9,450.00	3,307.50	9,450.00	3,307.50	=	P	12,757.50
Pantry Counter (Steel Sink with 25 mm thick granite slab for top & Splash Board with 3/4" thick marine plywood for cover, doors, carcass & shelves with base) - complete with accessories	lot	1.00	16,275.00	5,696.25	16,275.00	5,696.25	=	P	21,971.25
Handwashing Facility @ rear (3 faucet - CHB lavatory) - complete with accessories	lot	1.00	6,825.00	2,388.75	6,825.00	2,388.75	=	P	9,213.75
Sub-Total							=	P	43,942.50
<i>Unit Cost =</i>	Php.	43,942.50 /	1.00 lot	=	Php43,942.50	/	lot		
<i>Total Item Cost =</i>	Php.	43,942.50 x	1.00 lot	=	Php43,942.50				
I. DIRECT COST									1,951,244.70
II. INDIRECT COST (22% OF DIRECT COST)									429,273.83
III. TAX (5% OF DIRECT COST + INDIRECT COST)									119,025.93
IV. TOTAL CONSTRUCTION COST (I+II+III)									2,499,544.46

Reviewed and Revised by:


JOHN LIMEN G. MIRANDA
 NCDC Project Engineer

Noted by:


NOEL T. VIRAY
 Municipal Engineer

Approved by:

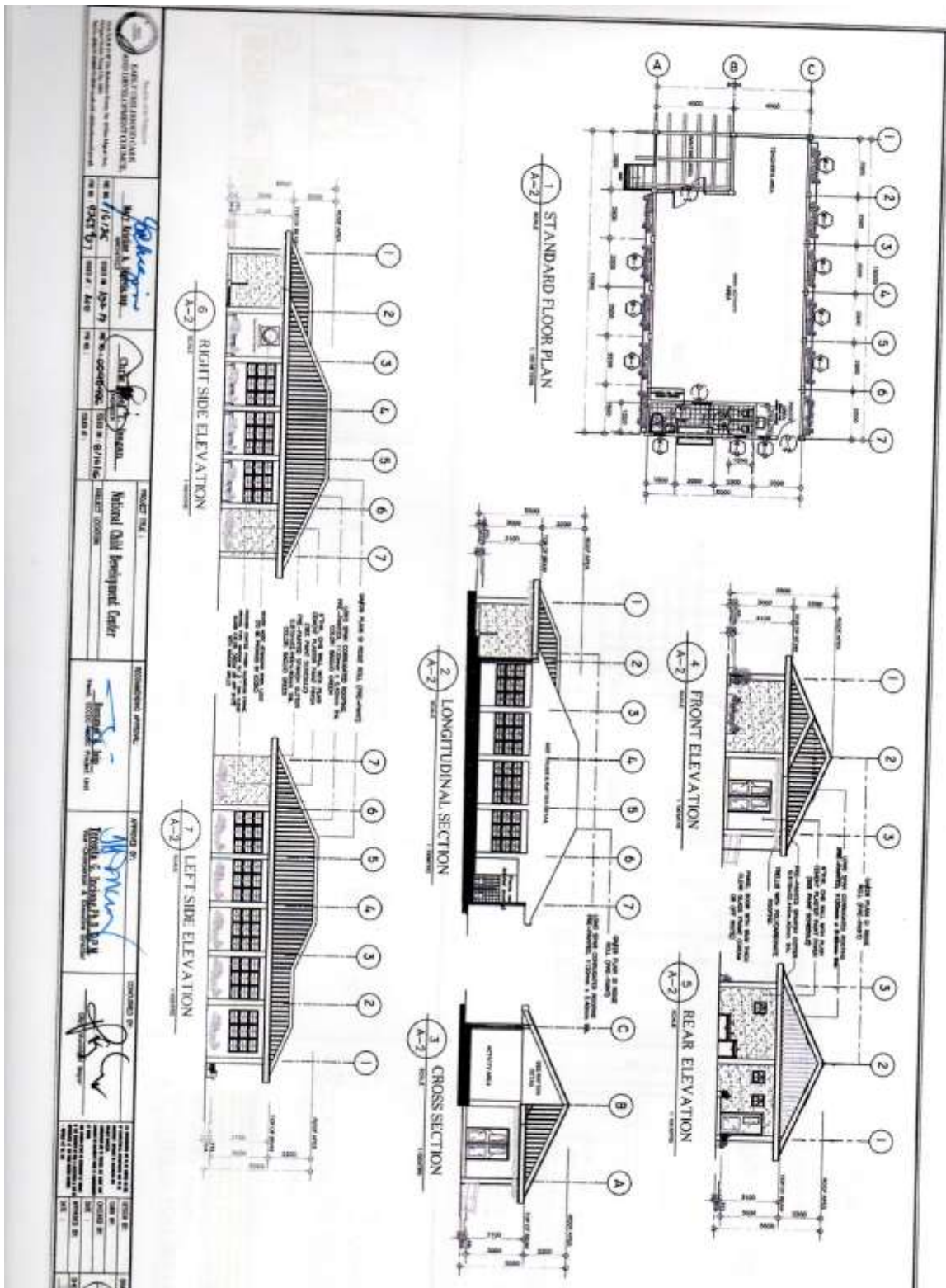

ROMMEL J. ISIP
 Head, NCDC Project Unit/ Finance & Budget

Concurred by:

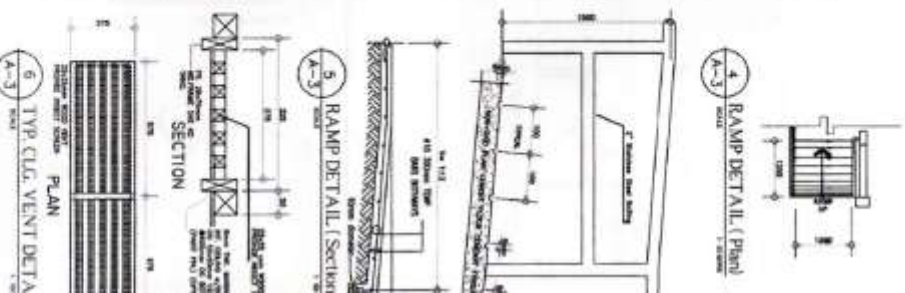
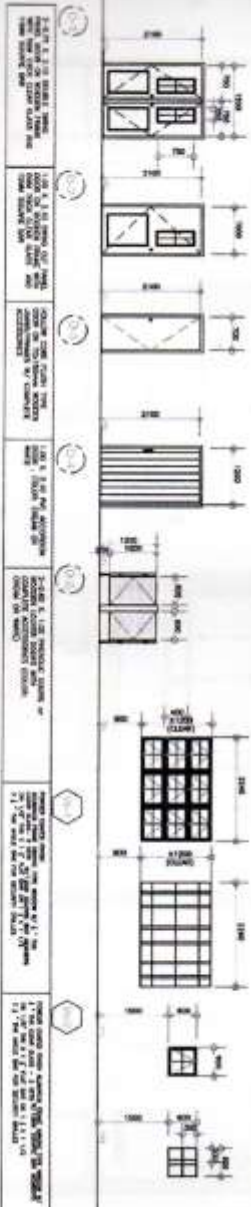
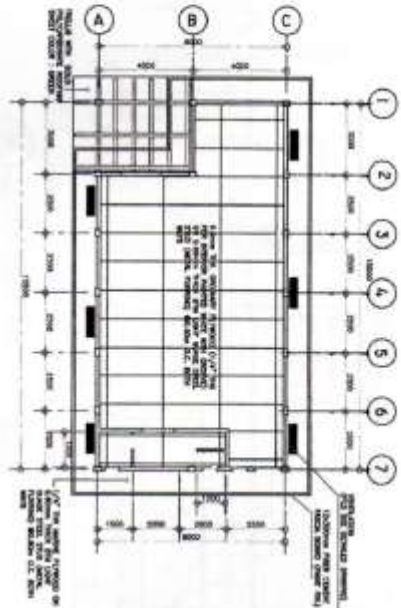
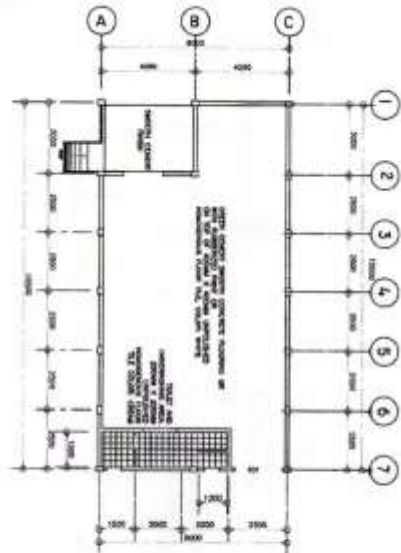

HON. ROMEL P. BAGABALDO
 Municipal Mayor

Section VII. Drawings

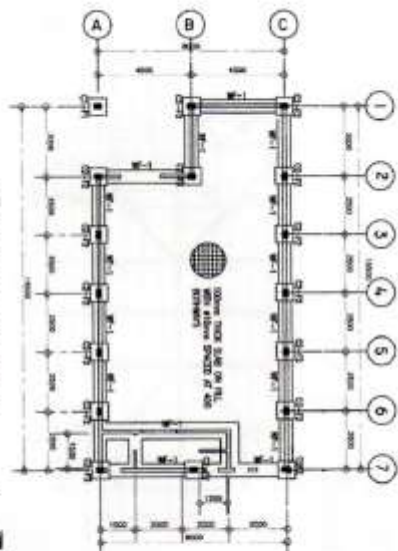
[Insert here a list of Drawings. The actual Drawings, including site plans, should be attached to this section, or annexed in a separate folder.]



		ARCHITECT Mr. Roger A. [Name]		PROJECT NO. National Old Development Center		DESIGNED BY [Name]	
DATE 1/16/78		SCALE 1/8" = 1'-0"		REVISIONS 1. 1/16/78		DATE 1/16/78	
PROJECT NO. [Number]		PROJECT NAME National Old Development Center		ARCHITECT [Name]		DESIGNED BY [Name]	
SCALE 1/8" = 1'-0"		REVISIONS 1. 1/16/78		DATE 1/16/78		PROJECT NO. [Number]	



		K&L ENGINEERING, INC. 1000 S. 10th Street, Suite 100 Lincoln, NE 68502 Phone: (402) 441-1111 Fax: (402) 441-1112 Website: www.kandleng.com		PROJECT TITLE: Mutual Aid Development Center		REGISTERED ARCHITECT: 		APPROVED BY: 		DATE: 10/15/2014	
CLIENT: Mutual Aid Development Center		PROJECT LOCATION: Mutual Aid Development Center		ARCHITECT: K&L Engineering, Inc.		DATE: 10/15/2014		SCALE: 1/8" = 1'-0"		PROJECT NO.: 14-001	
DATE: 10/15/2014		SCALE: 1/8" = 1'-0"		PROJECT NO.: 14-001		PROJECT TITLE: Mutual Aid Development Center		REGISTERED ARCHITECT: 		APPROVED BY: 	



1 FOUNDATION PLAN
S-1 SCALE

COLUMN SCHEDULE

LEVEL	C-1	C-2
LEVEL TO FOUNDATION	30" x 30" x 12' 0"	30" x 30" x 12' 0"
LEVEL TO FLOOR	30" x 30" x 12' 0"	30" x 30" x 12' 0"

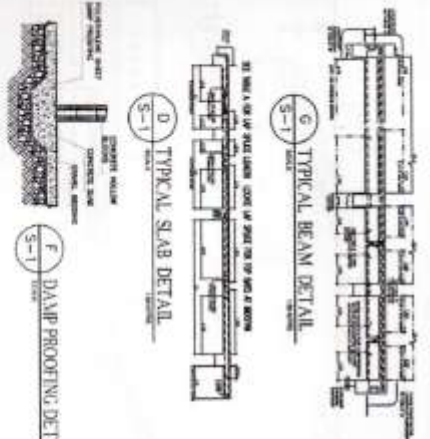
A. CONCRETE
 $f'_c = 3,000$ psi (20.7 MPa), minimum compression strength of concrete
B. REBAR
 $f_y = 2700$ psi (18.6 MPa), minimum yield strength of reinforcing bars
 $f_u = 2700$ psi (18.6 MPa), minimum tensile strength of reinforcing bars
C. CONSTRUCTION TOLERANCES
 $\pm 1/8$ in. (3.2 mm) for vertical dimensions
 $\pm 1/4$ in. (6.4 mm) for horizontal dimensions
D. FINISHES
 SEE FINISH SCHEDULE
 ALL DIMENSIONS UNLESS OTHERWISE SPECIFIED
 ALL DIMENSIONS TO FACE UNLESS OTHERWISE SPECIFIED

BEAM SCHEDULE

FLOOR	SPAN	STEEL REINFORCEMENT	STIRRUPS
1st	10'-0"	3 #4	3 #4
2nd	10'-0"	3 #4	3 #4
3rd	10'-0"	3 #4	3 #4
4th	10'-0"	3 #4	3 #4

SCHEDULE OF FOOTINGS

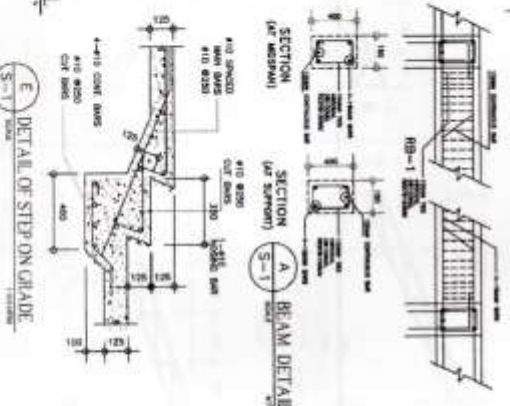
FOOTING NUMBER	FOOTING DIMENSIONS (ft-in)	REBAR/CONCRETE	NOTE
1	30" x 30" x 12' 0"	3 #4	1st Floor
2	30" x 30" x 12' 0"	3 #4	2nd Floor
3	30" x 30" x 12' 0"	3 #4	3rd Floor
4	30" x 30" x 12' 0"	3 #4	4th Floor



6 TYPICAL BEAM DETAIL
S-1 SCALE

0 TYPICAL SLAB DETAIL
S-1 SCALE

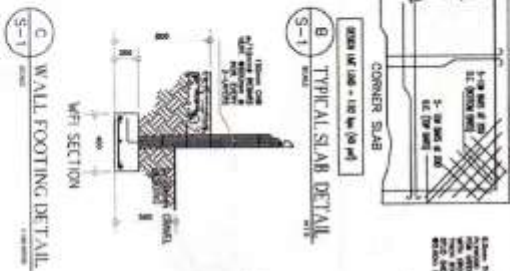
F DAMP PROOFING DETAIL
S-1 SCALE



A BEAM DETAIL
S-1 SCALE

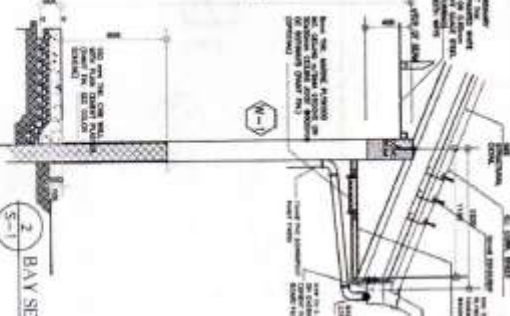
B BEAM DETAIL
S-1 SCALE

E DETAIL OF STEP ON GRADE
S-1 SCALE



B TYPICAL SLAB DETAIL
S-1 SCALE

C WALL FOOTING DETAIL
S-1 SCALE



2 BAY SE
S-1 SCALE

DESIGNER: *Blair*
ARCHITECT: *Blair*
ENGINEER: *Blair*
DATE: 10/1/17
PROJECT: Medical Outpatient Center
LOCATION: 1000 N. 10th St., Phoenix, AZ 85004
SCALE: 1/4" = 1'-0"

GENERAL NOTES

1. ALL DIMENSIONS UNLESS OTHERWISE NOTED ARE TO FACE UNLESS INDICATED OTHERWISE.
2. ALL DIMENSIONS ARE TO FACE UNLESS INDICATED OTHERWISE.
3. ALL DIMENSIONS ARE TO FACE UNLESS INDICATED OTHERWISE.
4. ALL DIMENSIONS ARE TO FACE UNLESS INDICATED OTHERWISE.
5. ALL DIMENSIONS ARE TO FACE UNLESS INDICATED OTHERWISE.
6. ALL DIMENSIONS ARE TO FACE UNLESS INDICATED OTHERWISE.
7. ALL DIMENSIONS ARE TO FACE UNLESS INDICATED OTHERWISE.
8. ALL DIMENSIONS ARE TO FACE UNLESS INDICATED OTHERWISE.
9. ALL DIMENSIONS ARE TO FACE UNLESS INDICATED OTHERWISE.
10. ALL DIMENSIONS ARE TO FACE UNLESS INDICATED OTHERWISE.

NOTES ON CONCRETE MIXES & PLACING

1. ALL CONCRETE SHALL BE PLACED IN PLACE AND CONSOLIDATED BY VIBRATION.
2. ALL CONCRETE SHALL BE PLACED IN PLACE AND CONSOLIDATED BY VIBRATION.
3. ALL CONCRETE SHALL BE PLACED IN PLACE AND CONSOLIDATED BY VIBRATION.
4. ALL CONCRETE SHALL BE PLACED IN PLACE AND CONSOLIDATED BY VIBRATION.
5. ALL CONCRETE SHALL BE PLACED IN PLACE AND CONSOLIDATED BY VIBRATION.

NOTES ON REINFORCING STEEL BARS

1. ALL REINFORCING STEEL SHALL BE PLACED IN PLACE AND CONSOLIDATED BY VIBRATION.
2. ALL REINFORCING STEEL SHALL BE PLACED IN PLACE AND CONSOLIDATED BY VIBRATION.
3. ALL REINFORCING STEEL SHALL BE PLACED IN PLACE AND CONSOLIDATED BY VIBRATION.
4. ALL REINFORCING STEEL SHALL BE PLACED IN PLACE AND CONSOLIDATED BY VIBRATION.
5. ALL REINFORCING STEEL SHALL BE PLACED IN PLACE AND CONSOLIDATED BY VIBRATION.

NOTES ON FOUNDATION

1. ALL FOUNDATION SHALL BE PLACED IN PLACE AND CONSOLIDATED BY VIBRATION.
2. ALL FOUNDATION SHALL BE PLACED IN PLACE AND CONSOLIDATED BY VIBRATION.
3. ALL FOUNDATION SHALL BE PLACED IN PLACE AND CONSOLIDATED BY VIBRATION.
4. ALL FOUNDATION SHALL BE PLACED IN PLACE AND CONSOLIDATED BY VIBRATION.
5. ALL FOUNDATION SHALL BE PLACED IN PLACE AND CONSOLIDATED BY VIBRATION.

NOTES ON DOWEL FOR EXTENSION

1. ALL DOWEL FOR EXTENSION SHALL BE PLACED IN PLACE AND CONSOLIDATED BY VIBRATION.
2. ALL DOWEL FOR EXTENSION SHALL BE PLACED IN PLACE AND CONSOLIDATED BY VIBRATION.
3. ALL DOWEL FOR EXTENSION SHALL BE PLACED IN PLACE AND CONSOLIDATED BY VIBRATION.

NOTES ON BEAMS AND GIRDERS

1. ALL BEAMS AND GIRDERS SHALL BE PLACED IN PLACE AND CONSOLIDATED BY VIBRATION.
2. ALL BEAMS AND GIRDERS SHALL BE PLACED IN PLACE AND CONSOLIDATED BY VIBRATION.
3. ALL BEAMS AND GIRDERS SHALL BE PLACED IN PLACE AND CONSOLIDATED BY VIBRATION.
4. ALL BEAMS AND GIRDERS SHALL BE PLACED IN PLACE AND CONSOLIDATED BY VIBRATION.
5. ALL BEAMS AND GIRDERS SHALL BE PLACED IN PLACE AND CONSOLIDATED BY VIBRATION.



TABLE A
DETAILS OF STANDARD HOOKS

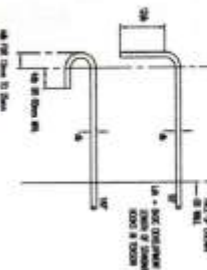
BAR SIZE	HOOK LENGTH (mm)	LAP LENGTH (mm)
10	150	350
12	180	400
14	210	450
16	240	500
18	270	550
20	300	600

NOTES ON MASONRY WALLS

1. ALL MASONRY WALLS SHALL BE PLACED IN PLACE AND CONSOLIDATED BY VIBRATION.
2. ALL MASONRY WALLS SHALL BE PLACED IN PLACE AND CONSOLIDATED BY VIBRATION.
3. ALL MASONRY WALLS SHALL BE PLACED IN PLACE AND CONSOLIDATED BY VIBRATION.
4. ALL MASONRY WALLS SHALL BE PLACED IN PLACE AND CONSOLIDATED BY VIBRATION.
5. ALL MASONRY WALLS SHALL BE PLACED IN PLACE AND CONSOLIDATED BY VIBRATION.

SCHEDULE OF CONCRETE INCLUDING BLOCK REINFORCEMENT

ITEM	DESCRIPTION	UNIT	QUANTITY
1	CONCRETE	m ³	100.00
2	REINFORCING STEEL	kg	5000.00
3	FORMWORK	m ²	2000.00
4	LABOR	hr	1000.00



NOTES ON CONCRETE SLABS

1. ALL CONCRETE SLABS SHALL BE PLACED IN PLACE AND CONSOLIDATED BY VIBRATION.
2. ALL CONCRETE SLABS SHALL BE PLACED IN PLACE AND CONSOLIDATED BY VIBRATION.
3. ALL CONCRETE SLABS SHALL BE PLACED IN PLACE AND CONSOLIDATED BY VIBRATION.
4. ALL CONCRETE SLABS SHALL BE PLACED IN PLACE AND CONSOLIDATED BY VIBRATION.
5. ALL CONCRETE SLABS SHALL BE PLACED IN PLACE AND CONSOLIDATED BY VIBRATION.

NOTES ON STRUCTURAL STEEL

1. ALL STRUCTURAL STEEL SHALL BE PLACED IN PLACE AND CONSOLIDATED BY VIBRATION.
2. ALL STRUCTURAL STEEL SHALL BE PLACED IN PLACE AND CONSOLIDATED BY VIBRATION.
3. ALL STRUCTURAL STEEL SHALL BE PLACED IN PLACE AND CONSOLIDATED BY VIBRATION.
4. ALL STRUCTURAL STEEL SHALL BE PLACED IN PLACE AND CONSOLIDATED BY VIBRATION.
5. ALL STRUCTURAL STEEL SHALL BE PLACED IN PLACE AND CONSOLIDATED BY VIBRATION.

NOTES ON COLUMNS

1. ALL COLUMNS SHALL BE PLACED IN PLACE AND CONSOLIDATED BY VIBRATION.
2. ALL COLUMNS SHALL BE PLACED IN PLACE AND CONSOLIDATED BY VIBRATION.
3. ALL COLUMNS SHALL BE PLACED IN PLACE AND CONSOLIDATED BY VIBRATION.
4. ALL COLUMNS SHALL BE PLACED IN PLACE AND CONSOLIDATED BY VIBRATION.
5. ALL COLUMNS SHALL BE PLACED IN PLACE AND CONSOLIDATED BY VIBRATION.

Project Information and Signatures:

Project No: 123456789

Client: ABC Company

Contract No: 987654321

Scale: 1:100

Revision: 1

Drawn by: [Signature]

Checked by: [Signature]

Approved by: [Signature]

Date: 12/31/2023

GENERAL NOTES

1. ALL ELECTRICAL WORKS SHALL COMPLY IN ACCORDANCE WITH THE RULES AND REGULATIONS OF THE APPLICABLE DIVISIONS OF THE LATEST EDITION OF THE NATIONAL ELECTRICAL CODE (NEC) AND THE REGULATIONS OF THE LOCAL DIVISIONS AUTHORITY AND THE REGULATIONS OF THE LOCAL POWER COMPANY. THE ELECTRICAL WORKS SHALL BE UNDER IMMEDIATE SUPERVISION OF A QUALIFIED ELECTRICAL ENGINEER.
2. THE ELECTRICAL SERVICE POWER IS 1-PHASE 2-WIRE, 230 V AC, 60 Hz.
3. SERVICE METHOD SHALL BE AS FOLLOWS:
 - a. FEEDERS AND BRANCHES - INTERMEDIATE METALLIC CONDUIT
 - b. LIGHTING POWER RECEPTANCE - EMT, 40
 - c. SWITCH, OIL, & AUXILIARY
4. ALL WIRING SHALL BE COPPER AND THERMOPLASTIC INSULATED TYPE UNLESS OTHERWISE INDICATED IN THE PLAN. THE MINIMUM SIZE OF WIRE FOR POWER AND LIGHTING CONDUIT HOWEVER SHALL BE 14 AWG. ALL WIRING SHALL BE UNDER IMMEDIATE SUPERVISION OF A QUALIFIED ELECTRICAL ENGINEER.
5. ALL OUTLET BOXES SHALL BE GALVANIZED STEEL NO. 16 DEEP TYPE WITH FACTORY HOOKOUTS.
6. ALL MATERIALS TO BE USED SHALL BE BRAND NEW AND APPROVED TYPE FOR THE PARTICULAR LOCATION AND PURPOSE OF USAGE.
7. PROWING SYSTEM SHALL BE ARRANGED TO ALL LIGHTING AND POWER CONDUIT AS PER THE APPLICABLE ELECTRICAL CODE REQUIREMENT.
8. LIGHTING HEIGHT OF FIXTURES SHALL BE AS FOLLOWS:
 - a. LIGHT SWITCH - 1.20 M ABOVE FINISH FLOOR
 - b. CONDUITANCE OUTLET - 0.30 M ABOVE FINISH FLOOR
 - c. PANELBOARD - 1.80 M ABOVE FINISH FLOOR

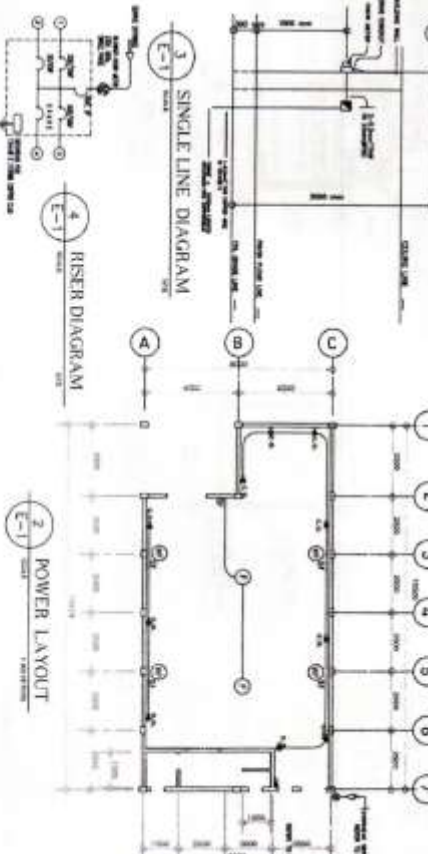
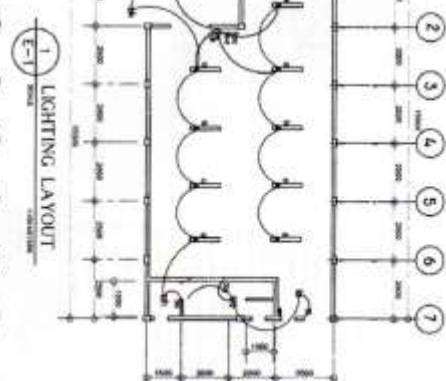
LOAD SCHEDULE

OUT. NO.	DESCRIPTION	V/A LOAD	CIRCUIT BREAKER	WIRE & CONDUIT SIZE
1	CONDUITANCE INLET	2250	2 30	2-3.5mm ² TRM N 15mm BGC
2	LIGHTS	1250	2 30	2-3.5mm ² TRM N 15mm BGC
3	FANS	1350	2 30	2-3.5mm ² TRM N 15mm BGC
4	SPRINK	230	-	-
TOTAL		4830		

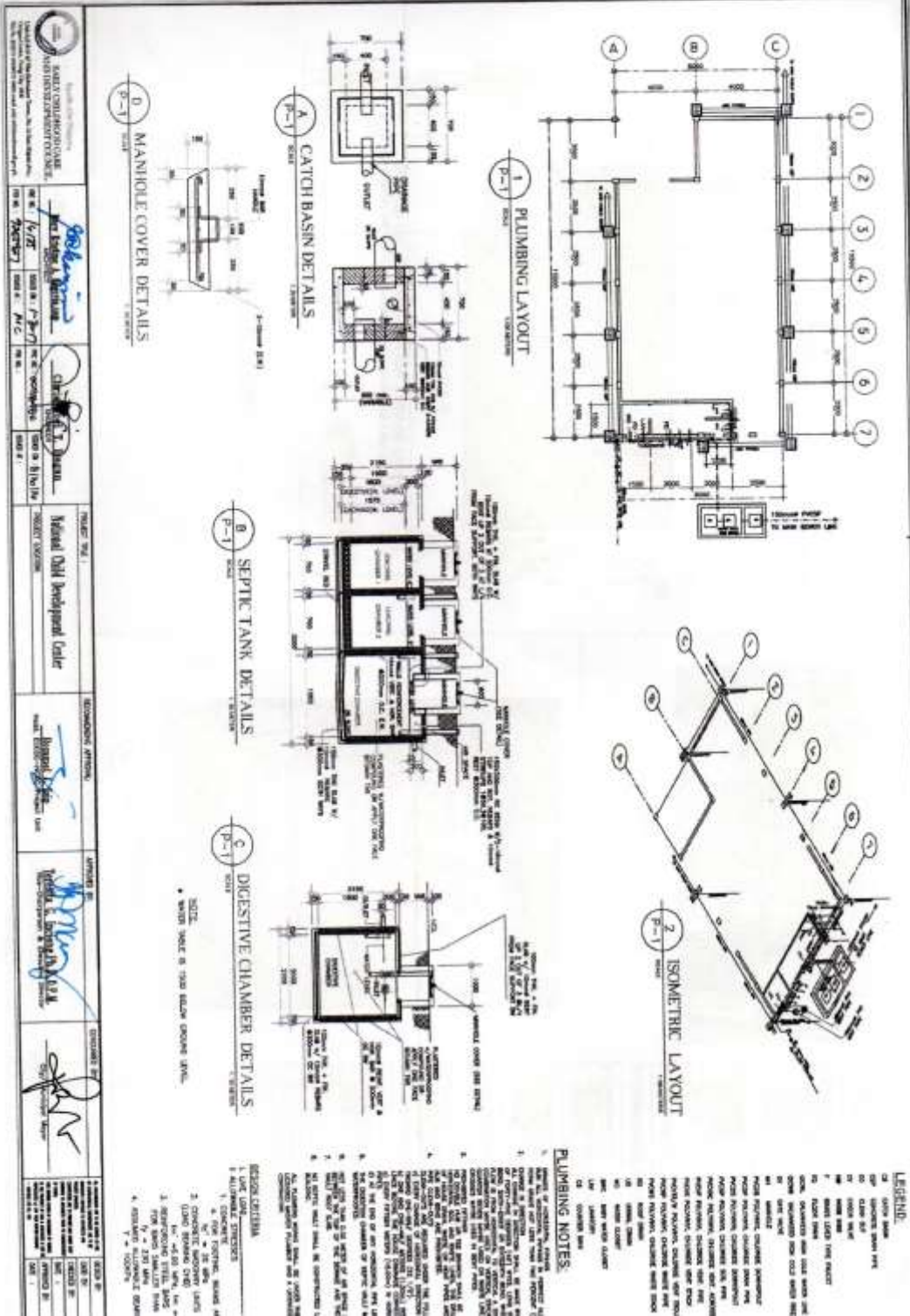
MAIN : 40A, 500V, 2P, 230V/1Ø
 R_L = 4830 = 21.07A
 PROTECTION: 40 A, 50 A, 2P, 230 V/1Ø

LEGEND

- | SYMBOL | DESCRIPTION |
|--------|---|
| ⬇ | CEILING LIGHT OUTLET |
| ⊕ | 2 x 60 WATT INCANDESCENT FLUORESCENT LAMP |
| ⊙ | CONTR. SW |
| ⊖ | WALL FAN / SWITCH |
| ⊕ | ONE GANG SWITCH |
| ⊖ | TWO GANG SWITCH |
| ⊕ | THREE GANG SWITCH |
| ⊖ | THREE WAY ONCE SWITCH |
| ⊕ | FAN CONTROL SWITCH |
-
- - - - - MAINLINE CONDUIT CONCEALED UNDER FLOOR
 - ⊕ PANELBOARD
 - - - - - DUPLEX CONDUITANCE OUTLET, SWAGING TYPE, 10 AMP, 250 VOLT WITH WOODEN PLATE COVER
 - - - - - W/RECEPTOR THE DUPLEX CONDUITANCE OUTLET, SWAGING TYPE, 10 AMP, 250 VOLT WITH WOODEN PLATE COVER
 - - - - - CONDUIT DIRECT TO PANELBOARD
 - - - - - CONDUIT BRANCH, ALONG AS HOOKOUT
 - - - - - ELECTRIC SERVICE WIRE
 - - - - - SERVICE ENTRANCE



PROJECT TITLE: National Child Development Center
CLIENT: National Child Development Center
ARCHITECT: [Signature]
DATE: [Date]
SCALE: [Scale]



STATE OF MISSISSIPPI
 MISSISSIPPI ARCHITECTURAL BOARD
 MISSISSIPPI BOARD OF PROFESSIONAL ENGINEERS
 MISSISSIPPI BOARD OF PROFESSIONAL LAND SURVEYORS
 MISSISSIPPI BOARD OF PROFESSIONAL ACCOUNTANTS
 MISSISSIPPI BOARD OF PROFESSIONAL INTERIORS DESIGNERS
 MISSISSIPPI BOARD OF PROFESSIONAL PLUMBERS AND PIPEFITTERS
 MISSISSIPPI BOARD OF PROFESSIONAL ELECTRICIANS
 MISSISSIPPI BOARD OF PROFESSIONAL MECHANICAL ENGINEERS
 MISSISSIPPI BOARD OF PROFESSIONAL CHEMISTS
 MISSISSIPPI BOARD OF PROFESSIONAL BIOLOGISTS
 MISSISSIPPI BOARD OF PROFESSIONAL NURSES
 MISSISSIPPI BOARD OF PROFESSIONAL SOCIAL WORKERS
 MISSISSIPPI BOARD OF PROFESSIONAL OCCUPATIONAL THERAPISTS
 MISSISSIPPI BOARD OF PROFESSIONAL SPEECH-LANGUAGE PATHOLOGISTS
 MISSISSIPPI BOARD OF PROFESSIONAL AUDIOLOGISTS
 MISSISSIPPI BOARD OF PROFESSIONAL OPTOMETRISTS
 MISSISSIPPI BOARD OF PROFESSIONAL OPTICIANS
 MISSISSIPPI BOARD OF PROFESSIONAL PHARMACEUTICAL MANAGERS
 MISSISSIPPI BOARD OF PROFESSIONAL VETERINARIANS
 MISSISSIPPI BOARD OF PROFESSIONAL VETERINARY MEDICAL TECHNOLOGISTS
 MISSISSIPPI BOARD OF PROFESSIONAL VETERINARY NURSES
 MISSISSIPPI BOARD OF PROFESSIONAL VETERINARY ASSISTANTS
 MISSISSIPPI BOARD OF PROFESSIONAL VETERINARY LABORATORY ASSISTANTS
 MISSISSIPPI BOARD OF PROFESSIONAL VETERINARY X-RAY TECHNICIANS
 MISSISSIPPI BOARD OF PROFESSIONAL VETERINARY ANESTHETISTS
 MISSISSIPPI BOARD OF PROFESSIONAL VETERINARY SURGEONS
 MISSISSIPPI BOARD OF PROFESSIONAL VETERINARY DENTISTS
 MISSISSIPPI BOARD OF PROFESSIONAL VETERINARY Ophthalmologists
 MISSISSIPPI BOARD OF PROFESSIONAL VETERINARY Otorhinolaryngologists
 MISSISSIPPI BOARD OF PROFESSIONAL VETERINARY Podiatrists
 MISSISSIPPI BOARD OF PROFESSIONAL VETERINARY Radiologists
 MISSISSIPPI BOARD OF PROFESSIONAL VETERINARY Theriogenologists
 MISSISSIPPI BOARD OF PROFESSIONAL VETERINARY Toxicologists
 MISSISSIPPI BOARD OF PROFESSIONAL VETERINARY Pathologists
 MISSISSIPPI BOARD OF PROFESSIONAL VETERINARY Microbiologists
 MISSISSIPPI BOARD OF PROFESSIONAL VETERINARY Immunologists
 MISSISSIPPI BOARD OF PROFESSIONAL VETERINARY Parasitologists
 MISSISSIPPI BOARD OF PROFESSIONAL VETERINARY Entomologists
 MISSISSIPPI BOARD OF PROFESSIONAL VETERINARY Mammalogists
 MISSISSIPPI BOARD OF PROFESSIONAL VETERINARY Ornithologists
 MISSISSIPPI BOARD OF PROFESSIONAL VETERINARY Ichthyologists
 MISSISSIPPI BOARD OF PROFESSIONAL VETERINARY Herpetologists
 MISSISSIPPI BOARD OF PROFESSIONAL VETERINARY Reptiliologists
 MISSISSIPPI BOARD OF PROFESSIONAL VETERINARY Amphibiologists
 MISSISSIPPI BOARD OF PROFESSIONAL VETERINARY Molluscanologists
 MISSISSIPPI BOARD OF PROFESSIONAL VETERINARY Arachnologists
 MISSISSIPPI BOARD OF PROFESSIONAL VETERINARY Entomologists
 MISSISSIPPI BOARD OF PROFESSIONAL VETERINARY Malacologists
 MISSISSIPPI BOARD OF PROFESSIONAL VETERINARY Mammalogists
 MISSISSIPPI BOARD OF PROFESSIONAL VETERINARY Ornithologists
 MISSISSIPPI BOARD OF PROFESSIONAL VETERINARY Ichthyologists
 MISSISSIPPI BOARD OF PROFESSIONAL VETERINARY Herpetologists
 MISSISSIPPI BOARD OF PROFESSIONAL VETERINARY Reptiliologists
 MISSISSIPPI BOARD OF PROFESSIONAL VETERINARY Amphibiologists
 MISSISSIPPI BOARD OF PROFESSIONAL VETERINARY Molluscanologists
 MISSISSIPPI BOARD OF PROFESSIONAL VETERINARY Arachnologists
 MISSISSIPPI BOARD OF PROFESSIONAL VETERINARY Entomologists
 MISSISSIPPI BOARD OF PROFESSIONAL VETERINARY Malacologists

PROJECT NO. 1
 TITLE: Metal Oil Development Center
 CLIENT: Metal Oil Development Center
 ARCHITECT: [Signature]
 ENGINEER: [Signature]
 DATE: 1/27/17
 SCALE: A/C

DESIGN CHECKLIST
 1. LIFT LIFT
 2. ALL DIMENSIONS
 3. 1" = 12' SCALE
 4. 1" = 12' SCALE
 5. 1" = 12' SCALE
 6. 1" = 12' SCALE
 7. 1" = 12' SCALE
 8. 1" = 12' SCALE
 9. 1" = 12' SCALE
 10. 1" = 12' SCALE
 11. 1" = 12' SCALE
 12. 1" = 12' SCALE
 13. 1" = 12' SCALE
 14. 1" = 12' SCALE
 15. 1" = 12' SCALE
 16. 1" = 12' SCALE
 17. 1" = 12' SCALE
 18. 1" = 12' SCALE
 19. 1" = 12' SCALE
 20. 1" = 12' SCALE
 21. 1" = 12' SCALE
 22. 1" = 12' SCALE
 23. 1" = 12' SCALE
 24. 1" = 12' SCALE
 25. 1" = 12' SCALE
 26. 1" = 12' SCALE
 27. 1" = 12' SCALE
 28. 1" = 12' SCALE
 29. 1" = 12' SCALE
 30. 1" = 12' SCALE
 31. 1" = 12' SCALE
 32. 1" = 12' SCALE
 33. 1" = 12' SCALE
 34. 1" = 12' SCALE
 35. 1" = 12' SCALE
 36. 1" = 12' SCALE
 37. 1" = 12' SCALE
 38. 1" = 12' SCALE
 39. 1" = 12' SCALE
 40. 1" = 12' SCALE
 41. 1" = 12' SCALE
 42. 1" = 12' SCALE
 43. 1" = 12' SCALE
 44. 1" = 12' SCALE
 45. 1" = 12' SCALE
 46. 1" = 12' SCALE
 47. 1" = 12' SCALE
 48. 1" = 12' SCALE
 49. 1" = 12' SCALE
 50. 1" = 12' SCALE
 51. 1" = 12' SCALE
 52. 1" = 12' SCALE
 53. 1" = 12' SCALE
 54. 1" = 12' SCALE
 55. 1" = 12' SCALE
 56. 1" = 12' SCALE
 57. 1" = 12' SCALE
 58. 1" = 12' SCALE
 59. 1" = 12' SCALE
 60. 1" = 12' SCALE
 61. 1" = 12' SCALE
 62. 1" = 12' SCALE
 63. 1" = 12' SCALE
 64. 1" = 12' SCALE
 65. 1" = 12' SCALE
 66. 1" = 12' SCALE
 67. 1" = 12' SCALE
 68. 1" = 12' SCALE
 69. 1" = 12' SCALE
 70. 1" = 12' SCALE
 71. 1" = 12' SCALE
 72. 1" = 12' SCALE
 73. 1" = 12' SCALE
 74. 1" = 12' SCALE
 75. 1" = 12' SCALE
 76. 1" = 12' SCALE
 77. 1" = 12' SCALE
 78. 1" = 12' SCALE
 79. 1" = 12' SCALE
 80. 1" = 12' SCALE
 81. 1" = 12' SCALE
 82. 1" = 12' SCALE
 83. 1" = 12' SCALE
 84. 1" = 12' SCALE
 85. 1" = 12' SCALE
 86. 1" = 12' SCALE
 87. 1" = 12' SCALE
 88. 1" = 12' SCALE
 89. 1" = 12' SCALE
 90. 1" = 12' SCALE
 91. 1" = 12' SCALE
 92. 1" = 12' SCALE
 93. 1" = 12' SCALE
 94. 1" = 12' SCALE
 95. 1" = 12' SCALE
 96. 1" = 12' SCALE
 97. 1" = 12' SCALE
 98. 1" = 12' SCALE
 99. 1" = 12' SCALE
 100. 1" = 12' SCALE

Section VIII. Bill of Quantities

Signature Box

A signature box shall be added at the bottom of each page of the Bill of Quantities where the authorized representative of the Bidder shall affix his signature. Failure of the authorized representative to sign each and every page of the Bill of Quantities shall be a cause for rejection of his bid.

Section IX. Checklist of Technical and Financial Documents

Notes on the Checklist of Technical and Financial Documents

The prescribed documents in the checklist are mandatory to be submitted in the Bid, but shall be subject to the following:

- a. GPPB Resolution No. 09-2020 on the efficient procurement measures during a State of Calamity or other similar issuances that shall allow the use of alternate documents in lieu of the mandated requirements; or
- b. any subsequent GPPB issuances adjusting the documentary requirements after the effectivity of the adoption of the PBDs.

The BAC shall be checking the submitted documents of each Bidder against this checklist to ascertain if they are all present, using a non-discretionary “pass/fail” criterion pursuant to Section 30 of the 2016 revised IRR of RA No. 9184.

Checklist of Technical and Financial Documents

I. TECHNICAL COMPONENT ENVELOPE

Class “A” Documents

Legal Documents

- (a) Valid PhilGEPS Registration Certificate (Platinum Membership) (all pages);
or
- (b) Registration certificate from Securities and Exchange Commission (SEC), Department of Trade and Industry (DTI) for sole proprietorship, or Cooperative Development Authority (CDA) for cooperatives or its equivalent document;
and
- (c) Mayor’s or Business permit issued by the city or municipality where the principal place of business of the prospective bidder is located, or the equivalent document for Exclusive Economic Zones or Areas;
and
- (e) Tax clearance per E.O. No. 398, s. 2005, as finally reviewed and approved by the Bureau of Internal Revenue (BIR).

Technical Documents

- (f) Statement of the prospective bidder of all its ongoing government and private contracts, including contracts awarded but not yet started, if any, whether similar or not similar in nature and complexity to the contract to be bid; **and**
- (g) Statement of the bidder’s Single Largest Completed Contract (SLCC) similar to the contract to be bid, except under conditions provided under the rules;
and
- (h) Philippine Contractors Accreditation Board (PCAB) License;
or
Special PCAB License in case of Joint Ventures;
and registration for the type and cost of the contract to be bid; **and**
- (i) Original copy of Bid Security. If in the form of a Surety Bond, submit also a certification issued by the Insurance Commission;
or
Original copy of Notarized Bid Securing Declaration; **and**
- (j) Project Requirements, which shall include the following:
 - a. Organizational chart for the contract to be bid;
 - b. List of contractor’s key personnel (*e.g.*, Project Manager, Project Engineers, Materials Engineers, and Foremen), to be assigned to the contract to be bid, with their complete qualification and experience data;
 - c. List of contractor’s major equipment units, which are owned, leased, and/or under purchase agreements, supported by proof of ownership or certification of availability of equipment from the equipment lessor/vendor for the duration of the project, as the case may be; **and**
- (k) Original duly signed Omnibus Sworn Statement (OSS);

and if applicable, Original Notarized Secretary's Certificate in case of a corporation, partnership, or cooperative; or Original Special Power of Attorney of all members of the joint venture giving full power and authority to its officer to sign the OSS and do acts to represent the Bidder.

Financial Documents

- (l) The prospective bidder's audited financial statements, showing, among others, the prospective bidder's total and current assets and liabilities, stamped "received" by the BIR or its duly accredited and authorized institutions, for the preceding calendar year which should not be earlier than two (2) years from the date of bid submission; **and**
- (m) The prospective bidder's computation of Net Financial Contracting Capacity (NFCC).

Class "B" Documents

- (n) If applicable, duly signed joint venture agreement (JVA) in accordance with RA No. 4566 and its IRR in case the joint venture is already in existence;
or
duly notarized statements from all the potential joint venture partners stating that they will enter into and abide by the provisions of the JVA in the instance that the bid is successful.

II. FINANCIAL COMPONENT ENVELOPE

- (o) Original of duly signed and accomplished Financial Bid Form; **and**

Other documentary requirements under RA No. 9184

- (p) Original of duly signed Bid Prices in the Bill of Quantities; **and**
- (q) Duly accomplished Detailed Estimates Form, including a summary sheet indicating the unit prices of construction materials, labor rates, and equipment rentals used in coming up with the Bid; **and**
- (r) Cash Flow by Quarter.

